

Architizer

The World's Best
Building Products 2020



Architizer

The
World's Best
Building Products
2020

Jury and
Popular Choice
Winners

**The World's Best
Building Products**

7

**A+Awards
Product Jury**

9

How to Use This eBook

13

Winning Products

15

Catalogue of Finalists

121

Index

132

The World's Best Building-Products — As Chosen by Architects

Paul Keskeys, Editor-in-Chief

2020 has been a year like no other — but some things don't change. Well thought-out designs, robust detailing and timeless materials are as crucial as ever to the creation of great architecture and interiors. Architects are increasingly aware that their best hope for a successful project stems from collaboration with the makers of high quality building products, those that have an intimate knowledge of materials and the fabrication processes behind them.

But, with so many options out there, how can architects know which of those manufacturers to trust, and which products will provide them and their clients with the design solutions they need? Now in its eighth year, Architizer's A+Product Awards acts as a creative benchmark for the industry. Each winning product earns a professional stamp of quality, and provides the world's most innovative brands with the recognition their hard work deserves.

Regardless of size, location and existing reputation, makers of all kinds have a chance to gain recognition for their work, given the democratic nature of the voting process. There are two A+Product Awards for each category — one chosen via a free online vote, and one selected by a jury of more than 200 active specifiers and design thinkers. Both of these groups include a large number of architects and designers — professionals who specify tens of millions of dollars each year in building-products and materials.

For starters, the A+Awards jury includes:

- **Gaëlle Lauriot**, Designer and Art Director, Dominique Perrault Architecture
- **Julian Weyer**, Partner, C.F. Møller Architects
- **Neri Oxman**, Designer and Professor, MIT Media Lab
- **Carol Ross Barney**, Founder, Ross Barney Architects
- **Carlos Bannon**, Co-Founder, AirLab
- **Primo Orpilla**, Cofounder and Principal, Studio O+A
- **Sydney Mainster**, VP of Sustainability & Design Management, The Durst Organization
- **Yves Behar**, Founder, Fuseproject
- **Annabelle Selldorf**, Principal, Selldorf Architects
- **David Rockwell**, Founder and President, Rockwell Group
- **Joan Blumenfeld**, Design Principal and Interior Design Director, Perkins+Will
- **Gary Handel**, Founding Partner, Handel Architects
- **Peter Gluck**, Founder and Principal, GLUCK+
- **Ben Van Berkel**, Founder and Principal, UN Studio

These are just a few of the thought leaders that help decide the A+Award winning projects and products each year. The judging criteria for products entailed a rigorous review of the technical and aesthetic elements of each entry, and were split into three broad categories: Aesthetics, Performance and Integration.

Firstly, Aesthetics encompasses the visible shape and materiality of the product. The jury considered the product's form, detailing and quality, evaluating its relationship to the architecture it inhabits and the users who experience it. Secondly, Performance refers to achieving the often complex goals for which a product is intended. The jury were particularly focused on uncovering innovations that utilize new materials, improve existing building practices, or address new needs.

Finally, Integration refers to a product's potential to become ubiquitous — a design 'staple' — in a given category. The jury looked for products with the ability to be successfully implemented, durable, user friendly, brand relevant and applicable to a wide variety of challenges that architects face today.

Based on these criteria, 46 brands came out victorious, with a range of designers, fabricators and collaborators grabbing prestigious accolades in a wide variety of categories.

In the midst of unprecedented challenges relating to the environment and our collective health, the world's best building product designers and manufacturers have proven themselves to be truly dynamic innovators, developing advanced solutions in a matter of months to cater to the quickly changing needs of people in 2020. From self-cleaning surfaces and smart building systems to recycled furniture and biophilic materials, these products have been crafted to improve our quality of life not just for the present day, but for the long-term future of our planet.

This A+Product Awards eBook is dedicated to the next great wave of building-product manufacturers, those that will take architecture into 2021 with cutting-edge creative ideas. Each winner is represented on the following pages through a series of stunning photographs and an accompanying product overview. Take ample inspiration from the A+Product Awards Class of 2020 — this is what great product design looks like today.

A+Awards Jury



“Award programs like this encourage the effort to seek the best rather than the urgent.”

Peter Gluck, Founding Principal, GLUCK+



“For manufacturers, the Awards provide both recognition for design and motivation to excel against the competition. For architects, it brings to our attention many innovative products that we otherwise may not have known about. Together, these result in better product design and better architecture.”

Serena Losonczy, Associate Partner, PBDW Architects

Aaron Harcek

Design Principal, HDR

Abby Albers

Design Architect, Urban Improvement Construction

Adam Glickman

Partner, Glickman Schlesinger Architects

Agathe Ceccaldi

Lead Project Designer, The Fractal Group

Alan Calixto

Interior Design Director, Architecture Plus Information

Alf Naman

Founder, Alf Naman Real Estate Advisors

Allan Chochinov

Editor in Chief, Core77

Allison Morra

Associate, Erdy McHenry Architecture

András Török

Director, Summa Artium

Andrew Chaveas

Architect, SITIO

Andrew Shea

Principal, MANY Design; Assistant Professor of Integrated Design, Parsons the New School for Design

Andrew B. Cogan

CEO and Chairman, Knoll

Anina Weber Bach

Senior Architectural Designer, XTEN Architecture

Anita Helfrich

Associate, Handel Architects

Anita Sircar

Project Director, Davis, Carter, Scott

Ann Schiffrers

Sr. VP Specific Sales, USAI Lighting

Annabelle Selldorf

Principal, Selldorf Architects

Anthony Frisenda

Architect, Biber Architects

Ari Grazi

President, INDI EWALLS

Attila Saghi

CEO / Head of Development, SZ-Epitok / Varosliget

Ben Flanner

President, Director of Agriculture, Brooklyn Grange

Ben van Berkel

Founder/Principal Architect, UNStudio

Bernard Zyscovich

Founder & CEO, Zyscovich Architects

Bob Borson

Founder, LifeofanArchitect.com; Architect, Malone Maxwell Borson Architects

Brian Korte

Partner, Clayton & Little Architecture

Brian Leary

President, Commercial And Mixed Used, Crescent Communities

Bruno Gabbiani

President, ALA

Caleb Mulvena

Cofounder and Principal, Mapos Architects

Cameron Irwin

Associate, LMN Architects

Cameron Sinclair

Founder, Small Works

Cara Soh

Senior Architect, Quinn Evans Architects

Carl Gustav Magnusson

Founder, Carl Gustav Magnusson Design LLC

Carlo Ratti

Director, MIT Senseable Cities Lab; Founding Partner, Carlo Ratti Associati

Carlos Banon

Co-Founder and Director, AIRLAB SUTD

Carol Ross Barney

Design Principal, Ross Barney Architects

Carolina Vaccaro

Principal Architect and Design Professor, Temple University

Catherine Dannenbring

Director of Sustainability, Skanska USA

Chee Pearlman

Design Curator

A+Awards Jury

Cheryl S. Durst

Executive Vice President and CEO,
IIDA

Christopher Tepper

Founder, NYC Aids Memorial

Cliff Kuang

Director of Product Innovation,
Fast Company

Craig Schwitter

Principal, Buro Happold
Consulting Engineers

Daniel Barasch

Co-founder, The Lowline

Dave Eisenberg

Founder, Floored

David Von Spreckelsen

President, Toll Brothers City Living
in New York City

David Rockwell

Principal, Rockwell Group

Dr. Angelika Taschen

Publisher, Taschen Books

Dror Benshetrit

Principal, Studio Dror

Edwin Heathcote

Architecture & Design Critic, The
Financial Times

Efrain Cano

Designer / Project Lead, Outside
Architecture

Enrico Zanolla

Founder, Enrico Zanolla Design
Studios

Eric Spencer

Director, MAD architects

Erin Foxworthy

Project Architect, Finkle +
Williams Architecture

Erla D Ingjaldsdóttir

Principal, Minarc

Evie Soileau

Architect, LSM

Gaëlle Lauriot-Prévost

Artistic Director at Dominique
Perrault Architecture

Gary Handel

Partner, Handel Architects

Gil Even-Tsur

Founder & Design Director,
GE-T Architects

Glen Cummings

Partner, MTWTF

Grace Eun

Senior Associate, Clive Wilkinson
Architects

Grace Anne Friedhoff

Assistant Project Manager, ENV

Gunter Henn

Chairman, Henn Architekten

Gustavo Zamir Garcia

Associate, Erdy McHenry
Architecture

Hao Phung

Architectural Designer, Valerio
Dewalt Train

Harish Ratna

Director, TateHindle

Ian Collings

Co-Founder, Fort Standard

Ivan Lopez

Designer / Project Manager,
Alvidrez Architecture

Ivy Lee

Managing Director, Leigh &
Orange

Janice Chu

Project Architect, ENV

Jared Della Valle

President, Alloy Development

Jasmine Kenniche de Nouëne

Founder, JKLN Architects

Jason Forney

Principal, Bruner/Cott Architects

Jason Schupbach

Director, The Design School,
Arizona State University

Javier Artadi

Founder, artadi architects

Jeffrey Deitch

Founder, Deitch Projects

Jerry Waters

Principal, ZGF Architects

Joan Blumenfeld

Interior Design Director,
Perkins+Will

Joe Yacobellis

Director of Design, Mojo Stumer
Associates

John Wissinger

Design Director, AECOM

Jonathan McDowell

Director, Matter Architecture Ltd

Jonathan D. Solomon

Director of Architecture, Interior
Architecture and Designed
Objects, UCLA

Joshua Gilpin

Architect, EOP Architects

Julian Weyer

MAA Partner, CF Moller

Justin Piercy

Senior Associate, Jim Jennings
Architecture

Karim Rashid

Designer

Katie Hoke

Principal & Owner, Hoke Ley

Katina Max Kremelberg

Project Architect, Architecture Plus
Information

Kenneth Namkung

Senior Associate, Studio Link-Arc
LLC

Kim Herforth Nielsen

Founder & Creative Director, 3XN
Architects

Kimball Hales

Senior Project Manager, Finkle +
Williams

Kyle Mastalinski

Designer, Ziger|Snead Architects

Laura Kirar

Founder, Laura Kirar Design

Lauren Schlesinger

Partner, Glickman Schlesinger
Architects

Lauren Sherman Hiatt

Architect, The Beck Group

Lawrence Kim

Director, A+U Lab; Professor,
Pusan National University

Lesa Rozmarek

Architect, PBDW Architects

Louis Pounders

Design Architect, ANF Architects

Lucas Gray

Partner, Propel Studio

Lynda Whittle

Vice President of Marketing,
Allsteel

Marianne Goebel

Managing Director, Artek

Mark Yoes

Founding Principal, WXY Studio

Mark LaVenture

Associate, LMN Architects

Matt Shaver

Architect, Refine by UIC

Matthew LaBrake

Design Director, Blaze Makoid
Architecture

Michael Green

Principal, Michael Green
Architecture

Michael Westrate

Designer, Ziger|Snead Architects

Michael Luft-Weissberg

Architect / Project Manager,
WorkshopAPD

Michele Busiri-Vici

Founding Principal,
Space4Architecture (S4A)

Mikkel Bøgh

Chief Operating Officer, Effekt

Monica Haelfelfinger

Principal, XTEN Architecture

Nancy Usrey

Director of Strategy, HNTB
Corporation

Natalie Telewiak

Principal, Michael Green
Architecture

Neri Oxman

Founding Director, Mediated
Matter, MIT Media Lab

Nick Moshenko

Founding Partner, Designstor

Noah Bentley

Architect, Valerio Dewalt Train
Associates

Peter Gluck

Founder and Principal, GLUCK+

Pippo Ciorra

Senior Curator, MAXXI Architettura

Primo Orpilla

Founder and Partner, O+A

Prof. Dr. Andres Lepik

Direktor, Architekturmuseum,
Universität München

Rachel Gutter

SVP of Knowledge, U.S. Green
Build Council

Rachel Shechtman

Founder, Story

Rahul Srivastava

Founder, Urbanology

A+Awards Jury

Ralf Groene

Head of Industrial Design,
Microsoft

Randy Sabedra

Founder, RS Lighting Design

Randy J. Hunt

VP Design, Etsy

Rankin

Photographer and Director, Rankin
Photography

Renato Benedetti

Director, Benedetti Architects

Rick Fedrizzi

Co-Founder, USBGC; CEO,
International WELL Building
Institute

Robert Hammond

Co-Founder, Friends of the High
Line

Robert Ivy

Executive Vice President and Chief
Executive Officer, AIA

Robin Chase

Founder, Zipcar

Ronan Bouroullec

Partner, Ronan & Erwan Bouroullec
Design

Ronen Bekerman

Founder & Editor, Architectural
Visualization

Roo Rogers

Partner, fuseproject

Rory McGowan

Director, ARUP

Rosalie Genevro

Executive Director, The
Architectural League NY

Rosemarie Allaire

Principal, Rosemarie Allaire
Lighting Design

Roy Kim

Chief Creative Officer, Douglas
Elliman Development Marketing

Ryan Lintott

Founder, A Better Way To Do

Sabah Al Abbasi

Chief Creative Consultant & Editor-
in-Chief, Shawati

Salomon Frausto

Head of Education, The Berlage
Center for Advanced Studies in
Architecture and Urban Design

Sam Jacob

Principal, Sam Jacob Studio for
Architecture and Design

Samuel Medina

Web Editor, Metropolis

Sarah Filley

Cofounder and Executive Director,
Popuphood

Sarah Ichioka

Director, The Architecture
Foundation

Scott Burnham

Urban Strategist, Reprogramming
the City

Serena Losonczy

Associate Partner, PBDW
Architects

Seth Weissman

Founder, Weissman Equities

Shaun Osher

Founder and CEO, CORE

Sheila Kennedy

Professor of the Practice of
Architecture, MIT

Shelley Penn

Former National President,
Australian Institute of Architects

Silvia Kuhle

Founding Partner, Standard
Architecture

Simon Bird

Director, LOM Architecture and
Design

Simon Goetz

Partner, Milkshake Studios

Sinem Marrone

PR Director, GAD Foundation /
GAD Architecture

Sommer Mathis

Editor, The Atlantic Cities

Soon Woo Kwon

Principal, Samoo Architects and
Engineers

Stefano Boeri

Principal, Stefano Boeri Architetti

Stephanie Wexler

Interior Designer, Archimania

Steve Trstenjak

Regional Design Leader, Woods
Bagot

Sue Tatge

VP, Director of Media, Wray Ward

Sung Jang

Product Designer, Sung Jang
Laboratory

Susanne Seitingner PhD

City Innovations Manager, Philips
Color Kinetics

Sydney Mainster

Vice President of Sustainability,
The Durst Organization

Teran Evans

Global Brand Experience Design
Director, PepsiCo

Tiana Plotnikova

Creative Director, Pullquest

Van Chu

Architect, Architecture Plus
Information

Wenjun Zhou

Founder and Director, 524 Studio

Wilfred Hernandez

Architect, The Fractal Group

Yichen Lu

Principal, Studio Link-Arc

Yves Behar

Founder / CCO, Fuseproject

ZHOU WenJun

Founder and Director, 524 Studio
/ 524 Architecture



"Awards programs like A+ help identify those that are thinking holistically about how design helps us in our daily lives, showcases the latest thinking, and groups products so architects can see the many different approaches to common problems. The creative spirit is alive and well!"

Primo Orpilla, Principal and CoFounder, Studio O+A

How to Use This eBook

For specifying architects, this digital publication forms the go-to resource for sourcing the most innovative, forward-thinking building-products and manufacturers for use in projects. A link to the official profile of each A+Award-winning brand is provided, where you can contact manufacturers directly to ask for more information on products, request a sample or schedule an in-person meeting.

To get the most out of this eBook, make sure to keep it top-of-mind and use it as a reference point from the very beginning, during the conceptual stages of each project. The earlier you collaborate with manufacturers, the more efficiently they can work with you to help bring your designs to life on the construction site.

The products showcased on the following pages all won A+Awards this year, but they are just a starting point for further exploration. Each manufacturer is constantly working to address the evolving needs of architects and their clients. Be sure to reach out to them to learn more about their current product range, and ask what they have in development. Together, creative designers and product manufacturers will shape the future of architecture!

Jury and Popular Choice Winners



WINNER

jury
popular choice

PRODUCT INFO

[schindler.com](https://www.schindler.com)

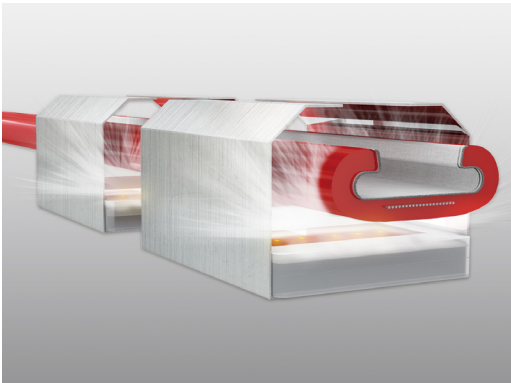
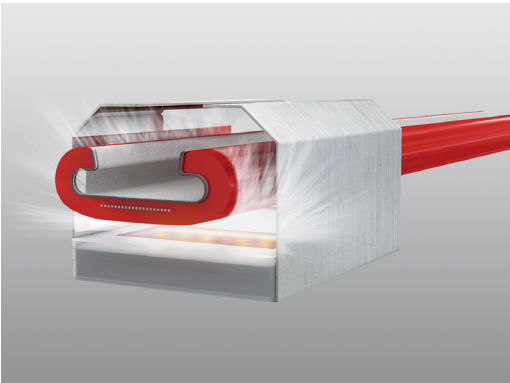
Schindler UV PRO & CleanRail

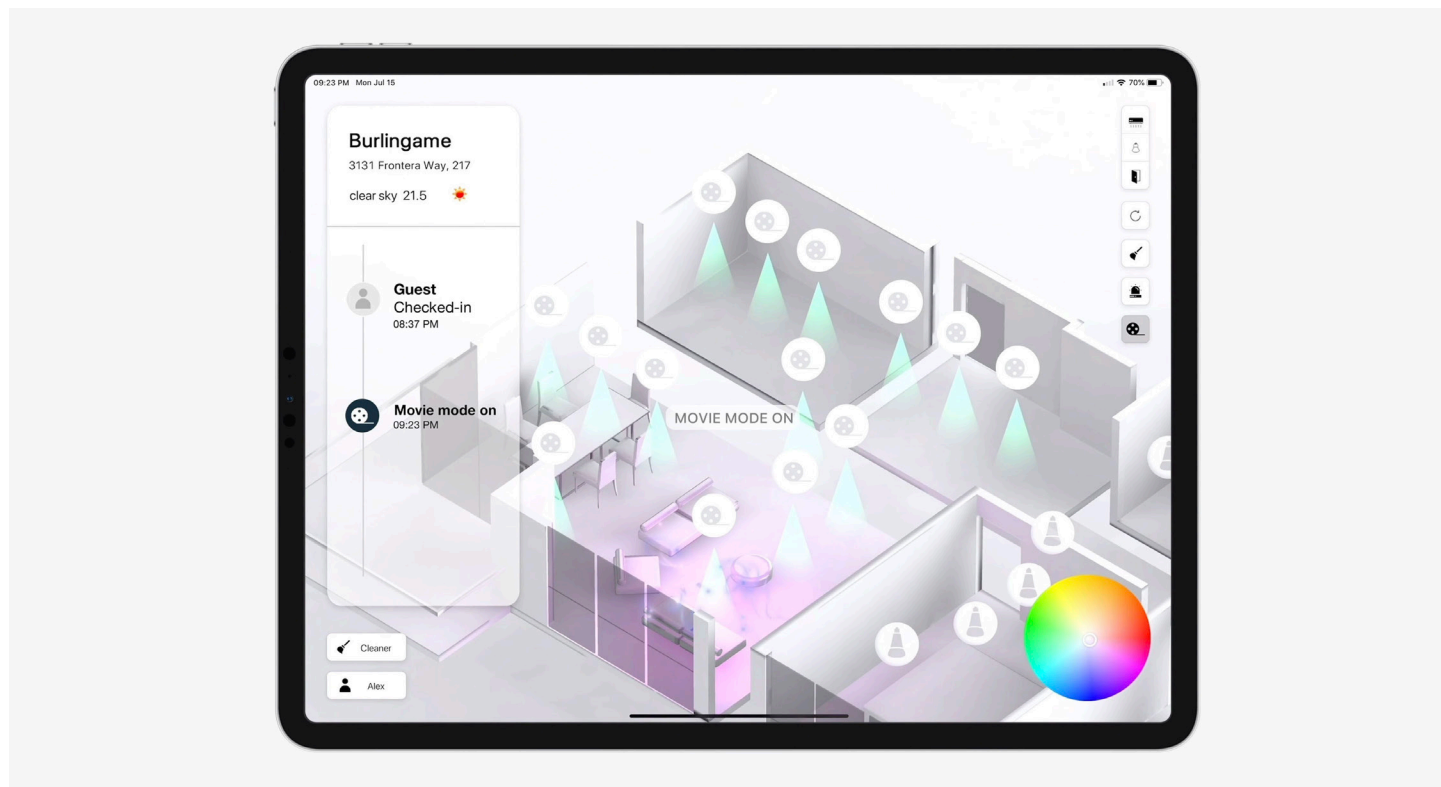
Schindler Elevator Corporation

As an added safeguard for buildings and facilities to help counter the spread of bacteria and viruses, Schindler has released two unique enhancements for mobility equipment: Schindler Handrail UV & Schindler CleanRail. These enhancements are offered as upgrades to both existing and new installations of escalators and moving walks.

Schindler has also been working at the forefront of innovative uses of UV light and sanitization applications in our elevator and escalator technology to promote better hygiene that may reduce the spread of germs. For instance, we are introducing Schindler CleanRail, an escalator handrail that serves as an added safeguard for passengers by inhibiting bacterial growth. Subway stations, airports and hospitals are just a few examples of public infrastructure where Schindler CleanRail technology can find practical application. We are also leveraging UV devices that use germicidal UV light to irradiate the handrails at a short distance. For instance, we can install the device inside the escalator or moving walkway as a practical solution to counter the rapid spread of bacteria and viruses.

As society navigates this transition to a new normal, Schindler's sanitization enhancements can play a role in offering greater peace of mind to building managers, property developers and riders.





WINNER

popular choice

PRODUCT INFO

livebutlr.com

Butlr Heatic™ Sensor and Butlr BI™ for Smart Living

Butlr

Imagine a building that understands and responds to your needs before you touch any button or switch.

Butlr uses small, low-cost sensors to track the motions and body heat of each person with a biometric heat signature as unique as a fingerprint. The Butlr Heatic sensors recognize an individual's heat signature, and can modify room temperature and lighting for ideal comfort. Unlike cameras that track and record faces, the Butlr system relies on a heat signature, which is unique but cannot be used to trace your identity.

With a network of sensors and responsive, moving architectural elements, Butlr is the world's first and only contextual architecture solution. Butlr's sensor network captures human dynamics through state-of-the-art sensory monitoring and AI, without violating privacy. It detects user behaviors and indoor positions without using video footage, understanding the users' need to achieve seamless automation experience, preventing risk and optimizing business.

Butlr's vision is to empower the future of responsive architecture, where the built environment is as customizable as a streaming music podcast based on simple, intelligent architectural objects.





WINNER

jury

PRODUCT INFO

oriliving.com

Pocket Closet

Ori, Inc.

Ori's smart space technology allows building space to be used more efficiently, optimizing designs with flexibility to enable the allocation of more units. Ori's Pocket Closet is a smart, transformable spatial solution and divider that meets residential needs by increasing storage, privacy and room division — creating a walk-in closet to any residential unit.

Born out of the MIT Media Lab, Ori's sophisticated smart space technology enhances functionality and comfort through space optimization, increasing organization potential and space utility. Architects and designers now have a viable system that can be integrated earlier in the design process, reducing construction time while maximizing storage potential and square footage.

Its sleek, modern design features shelf space, a power-display nook that can hold a flat-screen TV, and a fold-down desk that doubles as a workspace. When expanded, the Pocket Closet offers ample shelving and hanging space for clothing, shoes and accessories, along with built-in LED lighting. Ori's Pocket Closet is available in three finishes (white, oak or walnut) and three sizes (4 feet, 6 feet or 8 feet), with options for single or double moving part configurations. Pocket Closet is built from 3/4-inch poplar plywood finished with high-quality laminate and assembled using heavy-duty hardware, ensuring durability.





WINNER

jury

PRODUCT INFO

zauben.com

Model Z

Zauben

We believe nature plays a vital role in creating a healthier and happier environment for people. Model Z brings your space to life with the world's smartest living wall system. Carefully designed with self-irrigation, IoT plant sensors, and attached plant lighting to provide the perfect amount of light to make sure that your living wall is always beautiful and healthy. We design our living walls with resilient, allergy-friendly plants known for their air purification benefits that help breathe life back into your space and purify the air up to 87%. Green your world today.





WINNER

popular choice

PRODUCT INFO

bendheim.com

Ventilated Glass Facade for Parking Structures

Bendheim

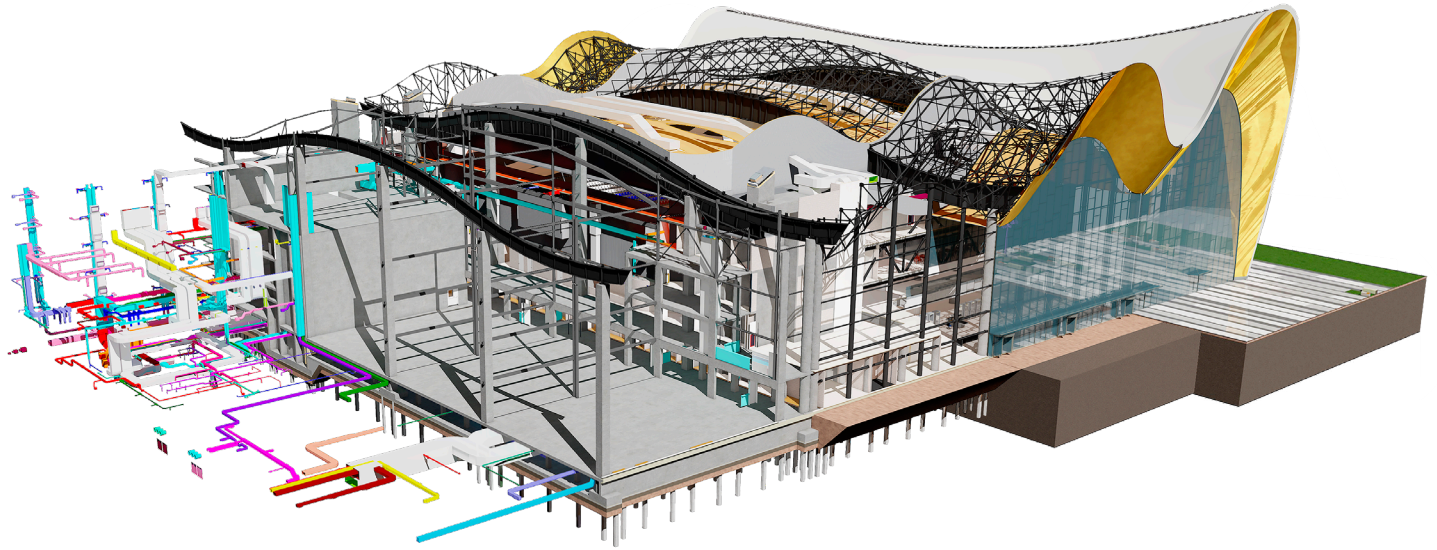
Bendheim's new ventilated glass facade system creates a jewel-like aesthetic, while maximizing natural ventilation and daylight. The generous amount of air flow is achieved through significant panel layout flexibility, built into the system. Specifiers can select from custom fritted, digitally printed, decorative laminated, etched, bird-friendly, and other specialty glass types to impart a unique identity to the structure, or provide the right balance between openness and privacy.

In addition to providing enhanced aesthetics, passive ventilation, daylight and views, the patent-pending parking facade system can contribute significant cost savings. By providing the required amount of natural ventilation through the customizable glass panel spacing, Bendheim's system can also eliminate expensive mechanical ventilation, substituting it with passive ventilation.

The facade system was originally created in collaboration with the architect and installer for the new 727 West Madison parking facility in Chicago. On this project, the system savings totaled over \$1 million.

The system consists of safety architectural glass, installed in powder-coated aluminum fittings. The custom spacing for the ventilation openings is created by specialized powder-coated steel plates, custom-engineered by Bendheim's technical design team for each project. Maximum glass panel size depends on the facade design, glass type and wind loads, reaching around 5 feet by 13 feet.





WINNER

popular choice

PRODUCT INFO

[graphisoft.com](https://www.graphisoft.com)

ARCHICAD 23

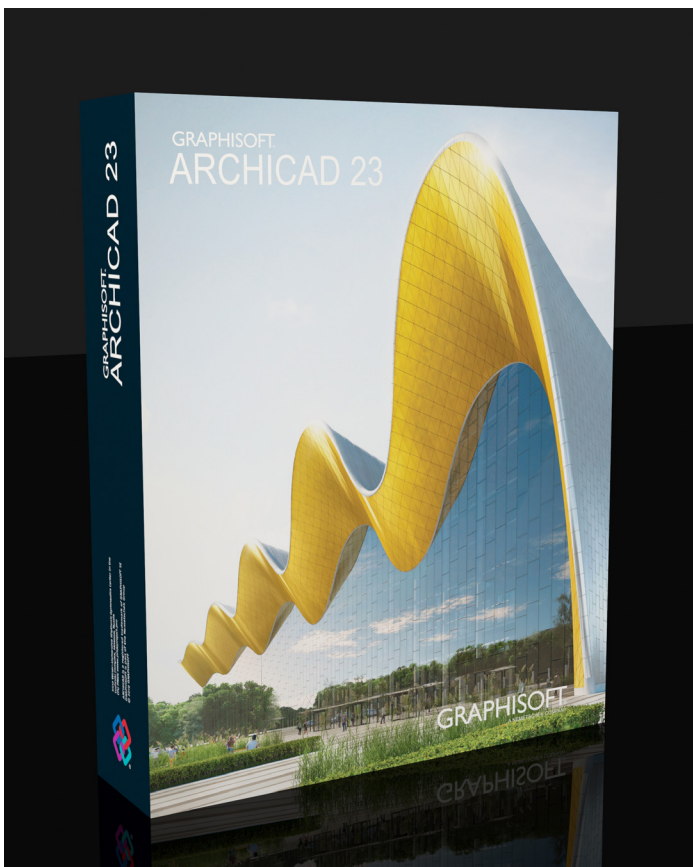
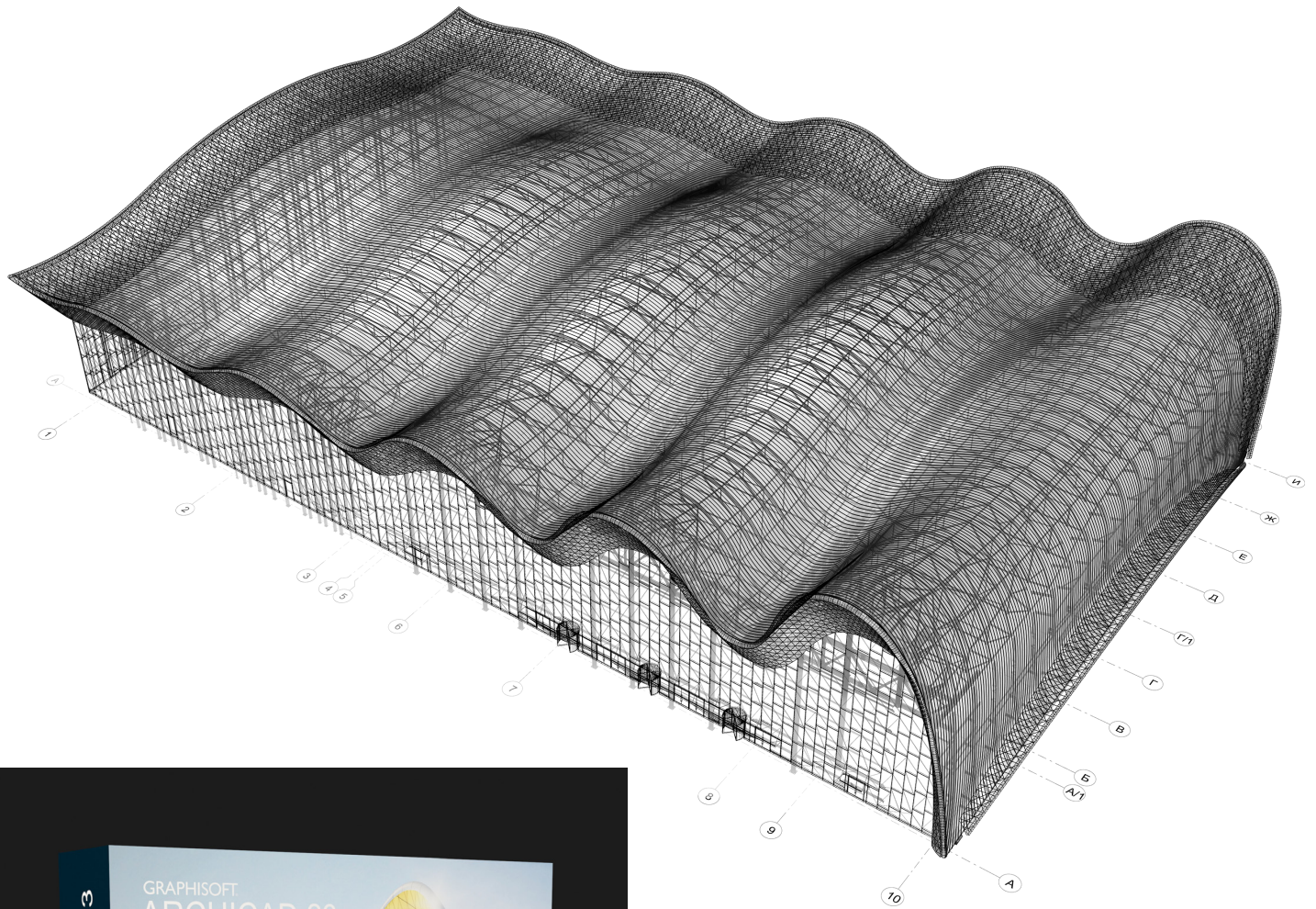
GRAPHISOFT

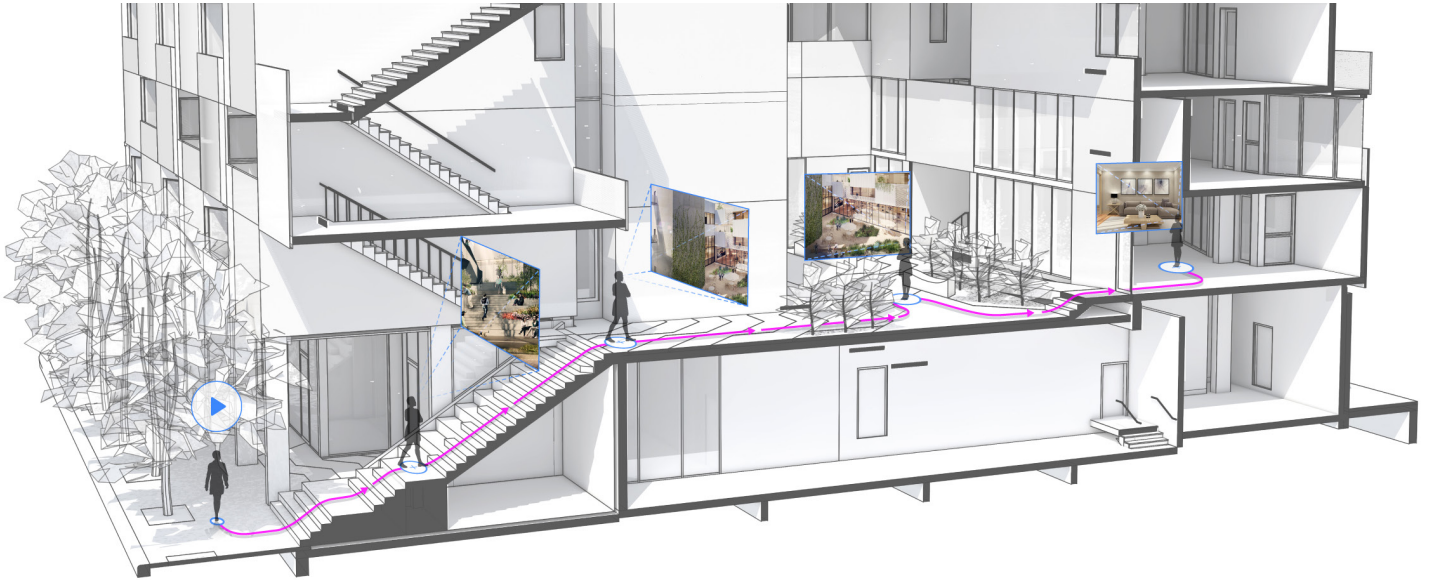
Available for both Windows and Macintosh, ARCHICAD offers a complete end-to-end design and documentation workflow for architectural and design practices of any size. According to user and analyst reviews, ARCHICAD is the easiest to learn and most fun to use. ARCHICAD's unique multi-threaded software architecture offers best-in-class software performance for projects of any size.

Announced in May 2019, ARCHICAD 23 is the latest version of the award-winning Building Information Modeling (BIM) software solution. Architects can look forward to speeding up everyday tasks such as powering up the software, file opening and switching between projects or between views of a BIM project.

Everyday tasks such as firing up the software and switching between projects or views in a specific project may end up being the very roadblocks to achieving the flow, which is the ideal state for architectural design. GRAPHISOFT has removed these roadblocks, putting the architect more firmly in the driver's seat, with the software responding to the way architects think and work. Complex 3D relationships and building elements are properly displayed and documented thanks to projected and symbolic views and cover fills. Gain greater control of designs with a broad range of options for key building components.

Image credits: Irina Viner-Usmanova Rhythmic Gymnastics Center in the Luzhniki Complex, Moscow, Russia by CPU PRIDE (www.prideproject.pro)





WINNER

jury

PRODUCT INFO

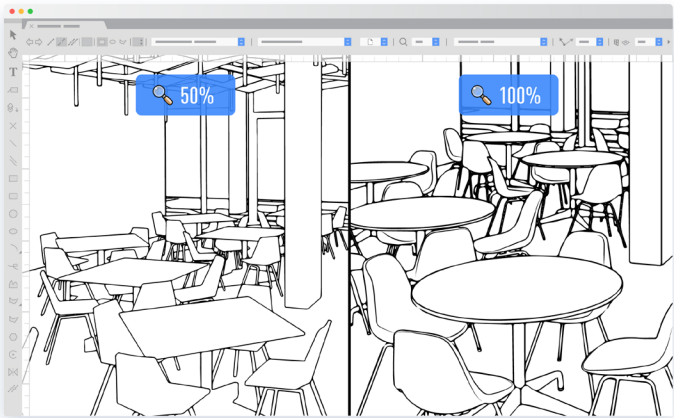
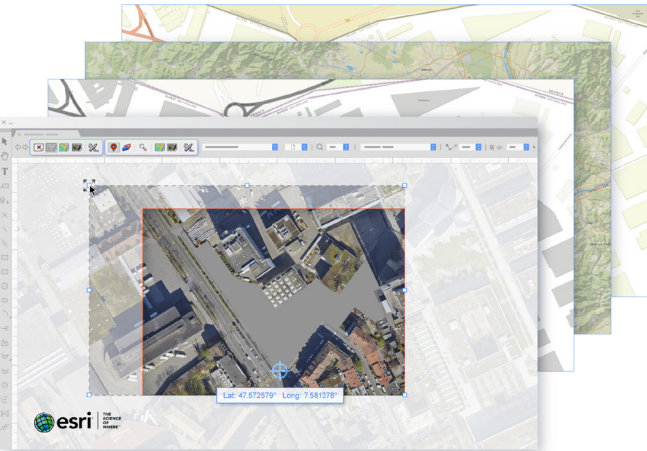
vectorworks.net

Vectorworks Architect 2020 software

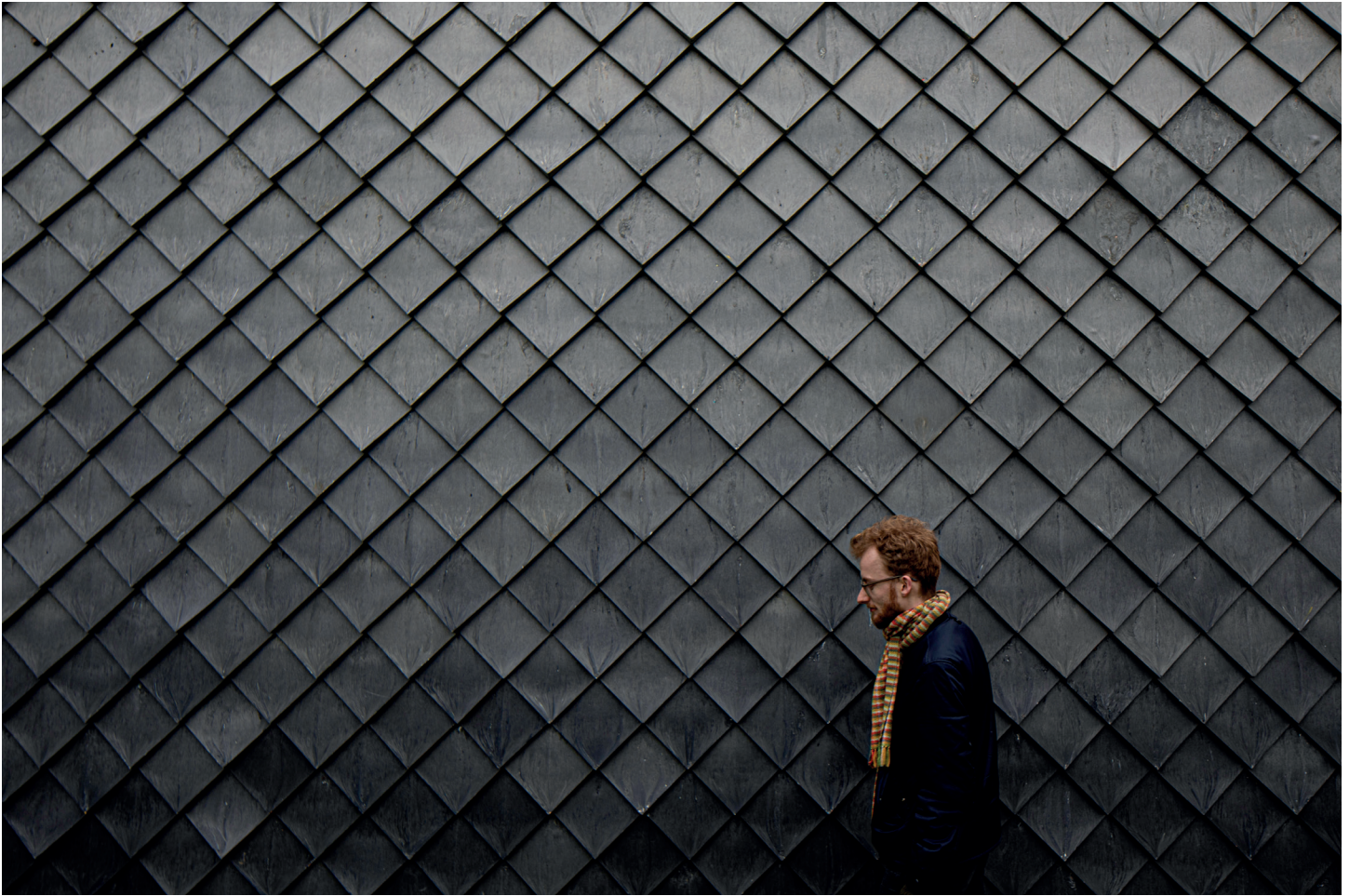
Vectorworks, Inc.

In today's complicated world of Building Information Modeling (BIM) requirements and workflow adjustments, inefficiencies exist from tools built for only part of the process. In response to this market need, Vectorworks developed Architect to support BIM requirements throughout the entire iterative design process from concept to construction in one software application. Created as an all-in-one software for 2D and 3D design work, Vectorworks Architect is the only modeling, drafting and documentation solution built with the entire architectural design process in mind. Notably, Architect has the largest number of import/export capabilities in the industry, allowing designers to seamlessly collaborate with everyone involved. With Vectorworks, designers can take on a project of any scale, from urban planning, high-rise buildings, to interior renovations and fit outs.

Released in September 2019, Vectorworks Architect 2020 was iterated with a focus on improved software performance and new data-driven workflows to bring its customers an even more powerful tool. It extends the existing Live Data Visualization feature to the design layer environment, which lets customers change objects' attributes using data parameters to visualize data for error checking, work validation and quality control. Additionally, customers will experience optimized open BIM capabilities, improved file performance and other updates.



Courtyard 33 | Design by 5468796 Architecture



WINNER

jury
popular choice

PRODUCT INFO

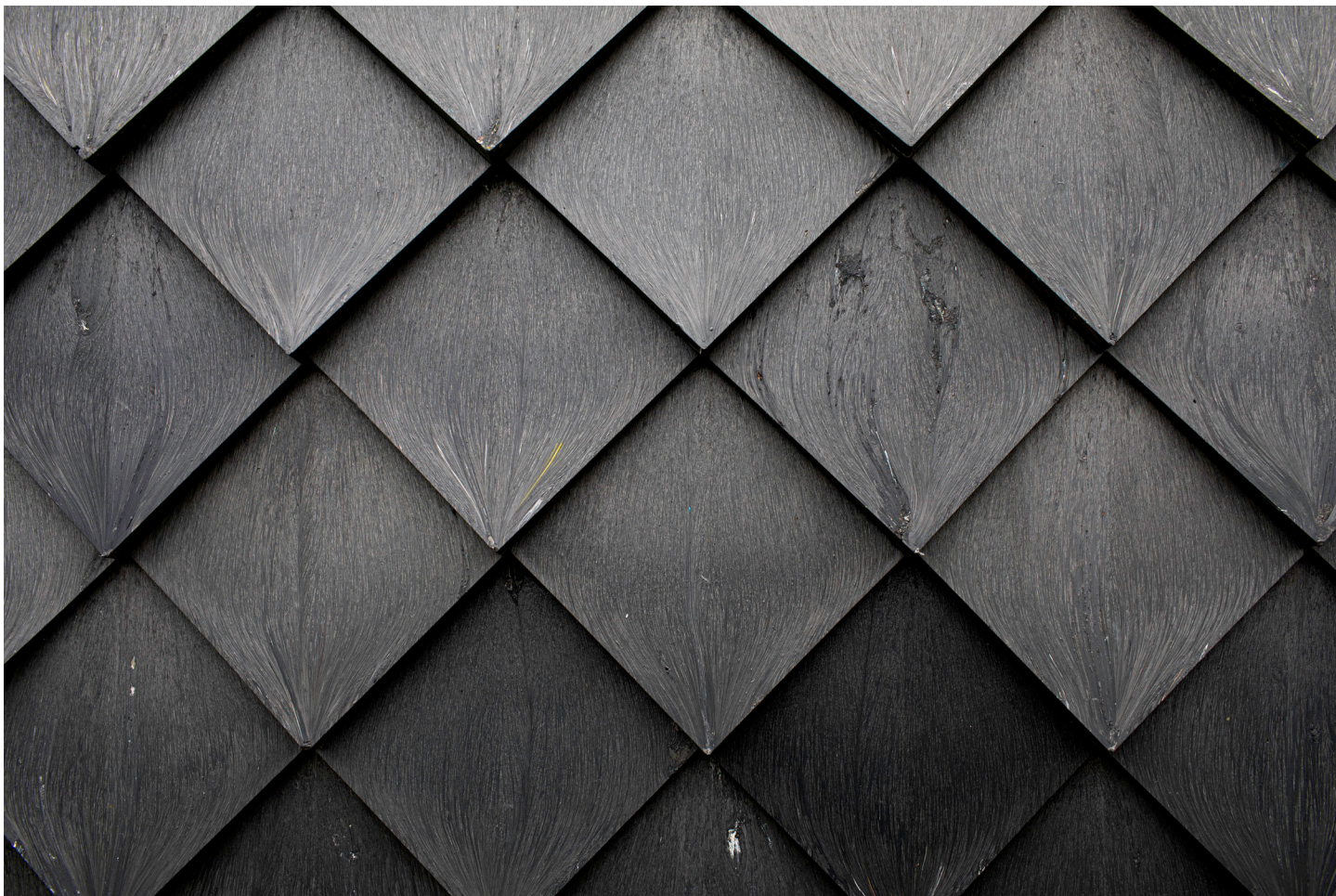
prettyplastic.nl

Pretty Plastic

Pretty Plastic

Pretty Plastic aims to produce cladding products made of upcycled plastic waste that look great, are safe to use, easy to apply, and last forever. Pretty Plastic contributes to a circular economy where waste does not exist and raw materials are used over and over again. Pretty Plastic is a cladding material that gives discarded building products a second life. Pretty Plastic tiles are now available in a range of grays. Because of variations in the recycled material, every tile is unique.

At the beginning of 2015 Reinder Bakker, Hester van Dijk and Peter van Assche, with their design studios bureau SLA and Overtreders W, got hold of a shipping container full of household plastic garbage. They immediately saw the beauty and potential of this waste. To prove that plastic upcycling can be competitive, they designed and built their own machine park: the Pretty Plastic Plant, which produced unique tiles for interior design projects. In 2017, the two design studios built the People's Pavilion as the main venue of Dutch Design Week. The building was clad with 9,000 upcycled plastic tiles. Pretty Plastic tiles can now be applied to any building and are available worldwide.





WINNER

popular choice

PRODUCT INFO

guardianglass.com

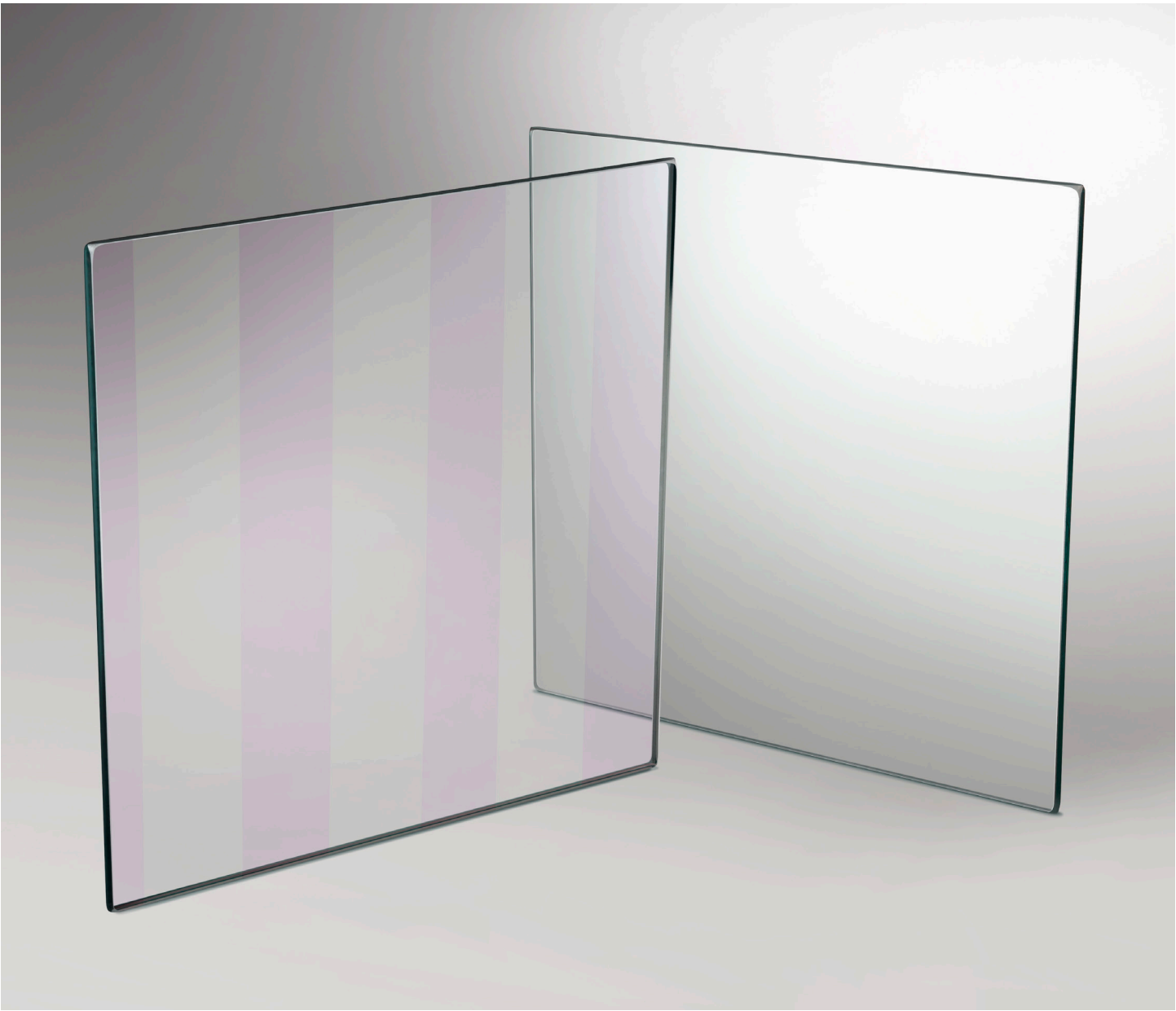
Guardian® Bird1st™ Glass

Guardian Glass

Guardian Bird1st glass offers the right balance of solar performance, aesthetics and bird safety. A patent-pending UV stripe coating on the first surface is virtually invisible to the human eye in dry conditions. Views remain pristine unlike traditional ceramic frit solutions. Paired with select Guardian SunGuard low-E coatings, Bird1st glass offers the high performance you want and need and may help projects earn LEED Pilot Credit 55 and Toronto Green Standard Bird Collision Deterrence standards.

According to the American Bird Conservancy, millions of birds die each year after colliding with building glass. Birds simply can't tell the reflection of trees and sky in facades from the real thing. The Guardian Bird1st UV stripe coating visually signals an impending barrier to birds and helps prevent collisions. To the human eye, Guardian Bird1st glass looks transparent in most viewing conditions. Guardian Bird1st coating can be applied to Guardian UltraClear low-iron glass or standard clear glass. It must be heat treated and laminated.

Guardian Bird1st glass can be customized in an insulating glass unit with a variety of high-performance, low-E SunGuard coated glass products on several tinted substrates to offer different levels of visible light transmission and solar heat gain.





WINNER

popular choice

PRODUCT INFO

arktura.com

SoftGrid® Flux

Arkтура

SoftGrid Flux is an innovative hexagonal ceiling system that combines sound attenuation and beautifully intricate detailing, in a flexible, scalable, easy-to-install package. It delivers a unique aesthetic and significant noise reduction through its detailed fin layout and construction from our high-performance PET Soft Sound acoustical material. This fully recyclable material is lightweight and durable, NRC rated up to 0.9, and made from up to 60% recycled plastic, helping reduce Flux's impact on the environment. Choose from a wide range of Soft Sound colors, as well as natural wood textures, to achieve the look of real wood, without sacrificing a single tree, or acoustic performance. All options are class A fire rated, and able to be mixed and matched as desired in layouts to style your ceiling in a variety of impactful ways.

SoftGrid Flux delivers complex, varied looks with a single repeating module. Its design breaks from the standard rectangular grid look with its hexagonal form, and further blurs the line between modules with fins that extend beyond the boundaries of each module, without interrupting tiling. SoftGrid Flux does this while working just as well individually, in clusters, or in fields, making it flexible to any design vision.





WINNER

jury

PRODUCT INFO

samiraboon.com

BiOrigami

Studio Samira Boon

BiOrigami is a series of interior products that make acoustic elements tactile, flexible and influences the way we experience spaces. It combines a new, circular biocomposite material with traditional Japanese origami and digital production techniques. This results in a high quality acoustic product that is versatile in its applications and has a distinctive visual appeal. BiOrigami can be installed as a prominent visual design element. We offer standard panels and customized solutions based on specific project requirements. Using parametric origami design software, we can create unique designs for digital fabrication. BiOrigami panels have two signature colors: sand and blue originating from their base materials — discarded jute bags and jeans.

BiOrigami has excellent acoustic properties due to its shape and structure. Folded surfaces, because of the different angles and inclinations, optimally reflect and diffuse sound waves. The material itself has similar to felt sound-absorption qualities. A key step in manufacturing BiOrigami structures is perforation, which incorporates both folding and acoustic functions.

Made of discarded textiles and bioplastics, BiOrigami shows that circular materials can be used to make products that have excellent acoustic and aesthetic qualities. As a textile architect, Studio Samira Boon always starts from the presupposition that acoustic materials serve more functions than simply sound absorption.





FOCAL POINT®

Bringing It All To Light®

*"It truly provides
a niche product
with a unique
look and great
performance."*



Focal Point

Company Bio

Focal Point is a Chicago-based, vertically integrated architectural lighting manufacturer like no other. For over a quarter of a century, guided by our belief that great lighting isn't just about meeting technical design requirements – it's about people and enhancing their experience in the spaces they inhabit – our focus has been on creating superior luminaire designs that stand the test of time while comfortably defining the space. Staying true to our design credo, we are now integrating lighting and sound management using beautifully simple forms to complement architecture, deliver optimal illumination, and control sound. Learn more about our people, approach, and why we value trusted partnerships by visiting our web site.

focalpointlights.com



Seem® 1 Acoustic Trio by Focal Point

Product Spotlight

Developed by innovative architectural lighting manufacturer Focal Point, the Seem 1 Acoustic Trio demonstrates what's possible when form and function are treated as perfect equals in the design process. The slender elements and Y-shaped configuration of this contemporary pendant allow it to blend seamlessly with virtually any modern interior, but its minimal aesthetics belie its high quality performance as both a light source and a sound absorber.

This ideal combination of qualities deserves recognition, and this striking light fixture received it on a global scale in the 8th Annual A+Awards, picking up the Juror's Choice Award in the Contract Lighting category. "Winning this award is truly exhilarating for Focal Point," said Mike McCoy, Director of Architectural Systems at Focal Point. "As an architectural lighting manufacturer for 26 years, acoustical lighting is newer in the industry and we are thrilled that the A&D community values Focal Point and our acoustic product line."

"As an architectural lighting manufacturer for 26 years, acoustical lighting is newer in the industry and we are thrilled that the A&D community values Focal Point and our acoustic product line."



Seem® 1 Acoustic Trio by Focal Point

Product Spotlight (cont.)

As with any emerging product type, there is ample room in acoustical lighting for innovation, and the Seem 1 Acoustic Trio is a perfect example of what can emerge when a brand is willing to explore creative ideas. The fixture is a new iteration on an earlier model, developed in direct response to users' feedback. "The market asked how to create fun, unique patterns in the ceiling with this product,"

said McCoy. "Taking the construction, light engine, and PET felt material to come up with a Y-shaped pendant allowed specifiers to create a dynamic ceiling with lit and unlit arrays."

Focal Point's willingness to continually iterate on its processes has resulted in a lighting design that is both robust and refined in its detailing. One of the biggest challenges for the team during the



design process was to create a product that not only looked good, but was also easy to transport to site and install. "Our team decided early on that a flat packable design stood to benefit all parties involved," explained Randal Zala, Senior Mechanical Engineer. "While it may not seem like a big deal, it impacted nearly every other component in the design process. Securely joining the 3 arms of a Seem 1 Acoustic Trio pendant became an exercise in packaging. We designed our joiner to cinch all 3 segments together simultaneously, in the space of a 1.5" triangle, by simply tightening a single Philips head screw."

"Taking the construction, light engine, and PET felt material to come up with a Y-shaped pendant allowed specifiers to create a dynamic ceiling with lit and unlit arrays."

Employing such a holistic approach to the design process may have presented challenges up front, but it resulted in a product which satisfies every stakeholder — including architects, contractors and clients — from initial specification to on-site installation.

The Seem 1 Acoustic Trio boasts improved performance specs, too. "It provides up to 40% more acoustical absorption than the Seem 1 Acoustic baffle system for the same surface area," explained McCoy. "This allows architects to easily integrate the product into their design thanks to the significant acoustical impact it can have in a space. Also, it leverages the powerful light engine of Seem 1, providing a host of direct only, indirect only, and direct/indirect lumen output options with various color temperatures and controllability with a selection of drivers. From the construction of the pendant, to lighting output options, to how it is assembled, and the 31 PET felt color options, it truly provides a niche product with a unique look and great performance."

These options provide architects with an array of creative possibilities for their next project, but Focal Point is not stopping there in its continual drive for improvement and innovation. McCoy spoke of the potential to introduce even more choices to the Seem 1 line in the future: "Custom capabilities for Seem 1 Acoustic Trio could include the combination of lit and unlit arms within a single pendant and the ability to join individual pendants arms together to form a connected ceiling system. This will allow for more design options within a ceiling space."

Whatever direction Focal Point takes this product in next, one thing seems certain — the Seem 1 series of acoustical lights will continue to illuminate this specialist industry, as well as attract countless architects and specifiers in the years ahead.



WINNER

popular choice

PRODUCT INFO

thibaultvanrenne.com

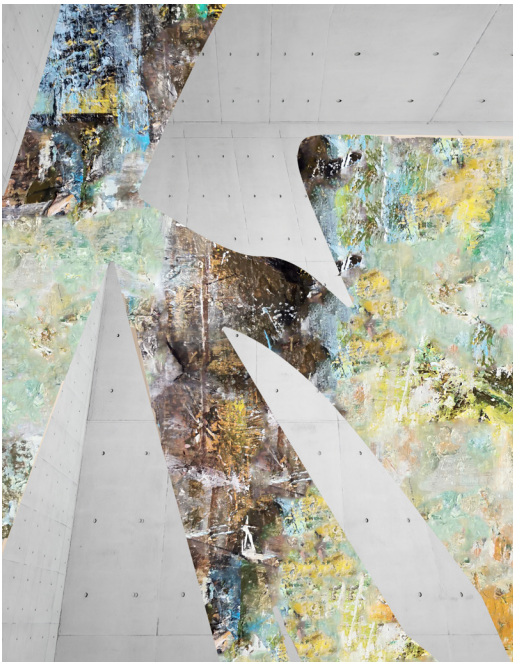
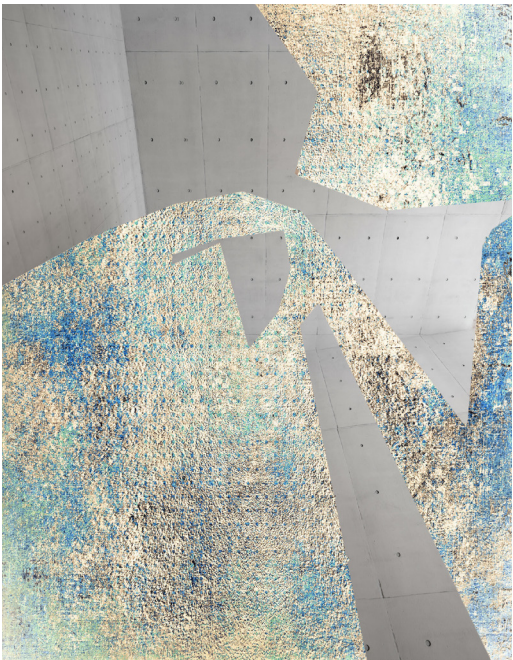
spaces

THIBAUT VAN RENNE

TVR's latest luxury collection of rugs is based on geometric patterns created from virtual images of 3D architecture. The combination of 3D architecture lines and abstract color patterns creates flow, depth and gives the unique immersive feeling TVR's designs are known for. The latest project of TVR by creative director Thibault Van Renne has been a long time in the making.

These rugs are woven in almost 200,000 knots per square meter in India. Materials used are wool and natural silk. Wool is hand-carded and hand-spun, and the silk is natural and hand-spun. This enhances the amazing look of these rugs.

All TVR rugs are made according to fair trade principles, fair wages for the workers, and are no-child-labor certified. All rugs are guaranteed with a 20-year warranty and are made according to eco values using only natural materials that are dyed with dyes that don't harm the environment. TVR works with a family in India that produces rugs for five generations and is the only rug company in India that has received eco-friendly certificates from the government for the purifying of water. This ensures no chemicals enter back into the environment.





WINNER

jury

PRODUCT INFO

iibyviv.com

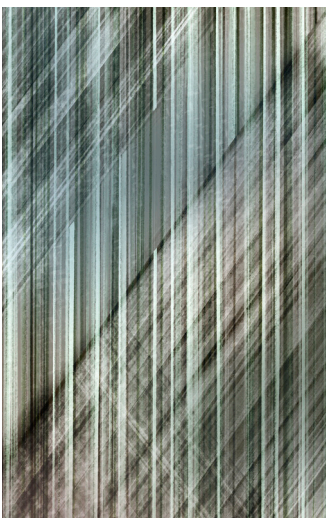
Mist Collection for Shaw Contract

REPUBLIC OF II BY IV

Mist is a new flooring collection that draws inspiration from “komorebi” — the Japanese word that refers to the effect of dappled sunlight as it filters through the trees. This new collection transforms the experience of space in subtle, nuanced ways bringing moments of calm to busy entrance ways, elevating hallways with elegant, understated luxury and providing statement rugs that capture the imagination.

The Shaw Contract team, in collaboration with REPUBLIC OF II BY IV, has designed a collection that creates an atmosphere of quiet discovery and a sophisticated mystique that enhances the space around it. With shared values and a passion for innovative and purposeful design, the teams worked seamlessly to produce a collection that is both unique and versatile.

Mist's patterns reveal themselves in slow reflective waves. Thoughtful brushstrokes act as windows of light into the layers of each design, unveiling a unique textile beauty. Each pattern has continuous threads that are perfectly engineered to make the carpet appear as if it were a watercolor painting. Utilizing Shaw Contract's Canvas dye-injection technology, which allows for multiple ink colors to be applied simultaneously, Mist is offered in a total of 18 captivating patterns with an unlimited selection of customizable colorway options.





WINNER

popular choice

PRODUCT INFO

skyfactory.com

INFINITY SkyCeiling

Sky Factory

The INFINITY SkyCeiling is a suspended, image-based ceiling cloud designed for high ceilings and open plenum spaces. This circular virtual skylight generates a visceral experience of vertical space when viewed directly underneath its circumference.

The INFINITY SkyCeiling is designed to introduce an element of visual comfort by providing a relaxing or biophilic focal point. While acoustic clouds are commonly used in a wide variety of corporate and commercial spaces, exposed ceiling environments often stand out for their complex and assorted planes.

The INFINITY SkyCeiling invites occupants to lift their gaze, experience the beauty of Sky Factory's multisensory illusions and relax. Sky Factory's photographic Open Sky Compositions are the only images of their kind to have earned environmental design awards for their multisensory properties.

INFINITY's biophilic presence offers an ideal visual counterpoint to Armstrong's noise reduction ceiling clouds commonly installed in lobbies, lounges, cafeterias and other public spaces.

The INFINITY SkyCeiling imbues contemporary interiors with calibrated daylight-quality light filtered through the company's research-verified, overhead sky imagery. It is the only sky imagery of its kind to be deliberately designed to trigger a multisensory effect on the observer, resulting in deep relaxation. SkyCeilings are effective in reducing acute stress and anxiety in enclosed interiors.





WINNER

jury

PRODUCT INFO

gordon-inc.com

WinLok Accessible Soffit / Ceiling, Screen Wall, & Fascia System

Gordon, Inc.

WinLok is an accessible ceiling/soffit, fascia, wall and screen wall cladding for both interior and exterior applications. WinLok's patented connection system makes it one of the easiest systems to install in the industry.

To meet the market's need for a monolithic, concealed panel attachment with point accessibility, without the need for mechanical panel attachment, Gordon developed WinLok. Without the need for mechanical panel attachments, unsightly access holes are eliminated.

The WinLok system allows for point accessibility with a special tool thereby providing security in restrictive access areas. This feature has been beneficial in obtaining acceptance by New York State Office of Mental Health with their Patient Safety Standards, Materials and Systems Guidelines.

For extreme design loads, project-specific engineered stamped calculations can be provided to meet hurricane force winds, blast loads, snow loads and seismic loads. WinLok attachment clips provide a holding force of 100 pounds per clip, when using 0.05-inch-thick aluminum.

WinLok panels are available in a broad range of materials and thicknesses, perforated or non-perforated, and can be configured for rectangular, triangular, trapezoidal and corrugated panel types.

This revolutionary WinLok system has received a USPTO patent. System components are factory powder-coated to AAMA 2605 or 2604 standards, providing warranties for up to 20 years.





WINNER

popular choice

PRODUCT INFO

caesar.it

JOIN

Ceramiche Caesar

The idea behind our research work is to blend the modern appeal of concrete with the elegance of resin. We have searched for a substantial soft and matte look, far from the plastic and reflecting appearance of resin conventionally used as a covering material for floors and walls.

The most evident elements from an aesthetic point of view are the spatulated marks, which are direct and quick, soft and not invasive. The charm of the spatulated marks lies in their irregularity, which recalls the appearance of industrial concrete.

The collection features four finishes to better fulfill the needs of each market. Soft: a pleasantly soft and smooth surface with a delicate texture; Matt R10A+B, a matt finish with a slip resistance advisable for any commercial project; and Graph, an innovative 3D finish with a decorative striped effect.

As a result of a peculiar industrial process, colors on these slabs are particularly bright and full. The two Dusk decors are slabs on which a color gradually blends into another one. On Spice Dusk, the two colors are a tone that recalls terracotta and an elegant dark blue, whereas on Verve Dusk, they are an olive green color accent and the same tone of blue.





WINNER

jury

PRODUCT INFO

mirage.it

Norr 2.0

Mirage

Norr is a sought-after and original look in a nordic-inspired design. It is a material with a distinctive, harmoniously random texture and shade-on-shade hues with a 3D effect. A unique project, where natural elements are reinterpreted in a creative way according to contemporary planning needs. The iconic texture is flanked by a new proposal in the same shades but with a denser grain and a stronger material component.

The collection is open to experimentation, proposing solutions with an absolutely contemporary style through a design exercise that speaks multiple languages, becoming synonymous with creativity and unprecedented expressive and emotional potential.

Through an articulated proposal of sizes and finishes, Norr 2.0 offers designers infinite application possibilities: floors, walls and interior design solutions, both in the public and residential areas. A versatility that also includes the stylistic dialogue between the indoor and outdoor world, in a global project of visual continuity, aesthetics and functionality.

Norr means choosing a safe and healthy product, free from dangerous and polluting substances. Because healthy products create healthy environments. Moreover, Norr is produced with great attention to environmental impact, because safeguarding the planet and its people requires an effort from all of us.





WINNER

jury

popular choice

PRODUCT INFO

coem.it

PORFIRICA

COEM/FIORENESE distributed by Stone Source

The name Porphyry comes from the ancient Greek meaning purple, a color frequently found in certain types of rocks, along with red, brown and gray. It is this rock that has inspired the Porfirica collection. Porphyry is a magmatic material formed by the cooling of lava flows. It has an extremely variegated, complex composition on which is created a “porphyritic” (porfirica in Italian) structure that also comprises minerals and crystalline elements.

This particular characteristic is featured in two patterns: a fine-grain version inspired by the original stone and a coarser-grain agglomerate. The stone-effect porcelain stoneware by Coem restores prestige and value to this stone, thanks to three surface finishes: unpolished, half-polished and outdoor. It includes five intense colors and two textures that allow for creative compositions on floors and walls.





WINNER

jury
popular choice

PRODUCT INFO

egger.com

Feelwood

EGGER

The Feelwood collection delivers the bold look, feel and aesthetic qualities of wood within a versatile surface material alternative. A cost-effective solution that is indistinguishable from solid wood and wood veneers, the embossed-in-register (EIR) finishes deliver striking, deeply textured woodgrains with the use of synchronized pore technology.

Feelwood, a revolutionary development in woodgrain laminate, offers a meticulously designed range of durable, fade-resistant, on-trend decorative surfaces with matching thermally fused laminate (TFL), laminates, edge banding and end-grain edge banding. This technology flawlessly aligns woodgrain patterns to the texture across a panel's surface, resulting in a deep, textured finish on both sides.

Feelwood can barely be told apart from wood — except when it comes to price. The material falls within even the most conservative budgets and offers a level of color variation not achievable with veneers. This makes it ideal for projects, especially ones with horizontal applications, like countertops. And, when compared to solid wood, these reproductions are more durable, easier to care for and less prone to discoloration when exposed to light.

Textures come in an extensive range, using tactile effects to add expression, character, depth, realism and enable architects to bring their design visions to life.

Finishes Hard Surfacing





WINNER

jury

popular choice

PRODUCT INFO

gardenonthewall.com

Garden Installations created with Preserved Plants

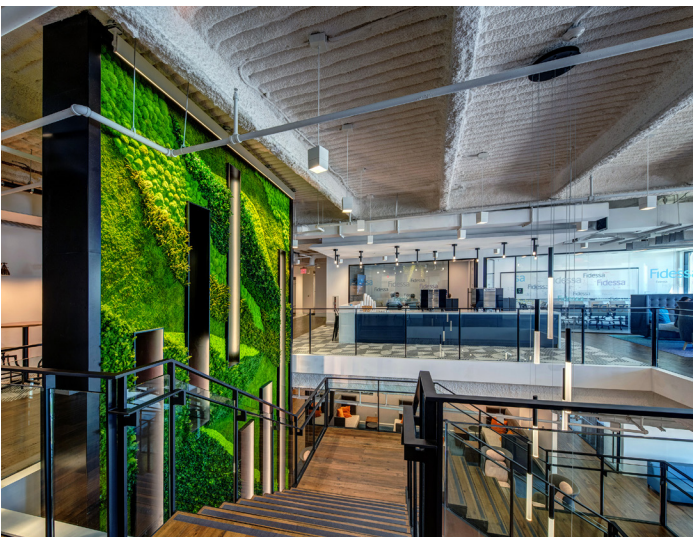
Garden on the Wall

Biophilia, generally defined as the human connection to the world of living things, is in our DNA.

Garden on the Wall is an award-winning provider of turn-key, maintenance-free garden installations exclusively for interiors. As the originator and undisputed leader of this new ecological genre in the U.S. Architectural & Design field — and with over 75,000 square feet of garden installations since inception at 58 Fortune 500 Companies — we help achieve our clients' biophilic design aspirations while eliminating all hassles of maintaining a living wall or plants. We offer beautiful indoor gardens that will retain their color, form and their fresh-cut state over 10 years with no maintenance requirements. It is a game changer for the designers who want to use biophilia and convince their clients easily.

Committed to product transparency and sustainable design, Garden on the Wall is the only no-upkeep indoor garden supplier in the world with the following credentials: Health Product Declaration (HPD 2.1.1); numerous credit contributions for LEED v4 projects (BD+C, ID+C, O+M); WELL Building Standard; the first wall garden system listed in the mindful MATERIALS (mM) database; and proven to reduce the noise levels with 0.44 Noise Reduction Coefficient and 0.45 SAA.

Finishes Wall & Wall Coverings





WINNER

popular choice

PRODUCT INFO

buzzi.space

BuzziRing

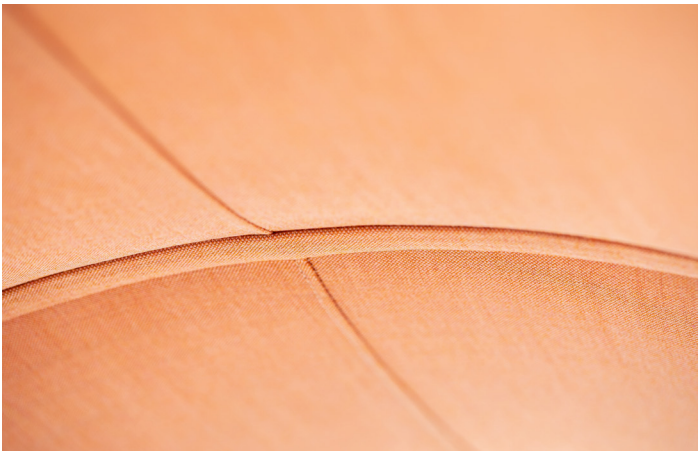
BuzziSpace

BuzziRing is the smallest meeting room on the market. One of its best features is that it's mounted to the wall, taking up only a small space in an office. An even better benefit is that it absorbs sound both on the inside and the outside, making it a must-have in any open-plan office or lounge when you want to have a space to focus in pairs.

Thanks to the space between the wall and BuzziRing, the upholstered-foam body can absorb the sound waves from crowded environments and prevent them from bouncing back into the room. At the same time, BuzziRing is acoustically well-balanced on the inside, being an ideal space for focused one-on-one meetings, catching up on emails, or making phone calls away from distractions.

The oval shape has been designed with functionality in mind. No matter the height of the people in a meeting, they will always be able to stick their heads in.

BuzziRing comes with a built-in wooden table, and a functional light with two USB ports for charging. The wide range of fabrics and colors makes customization easy, matching it with any decor. BuzziRing is versatile in a range of contract settings including workspace, hospitality, education and more.





WINNER

jury

PRODUCT INFO

arper.com

Paravan Mood

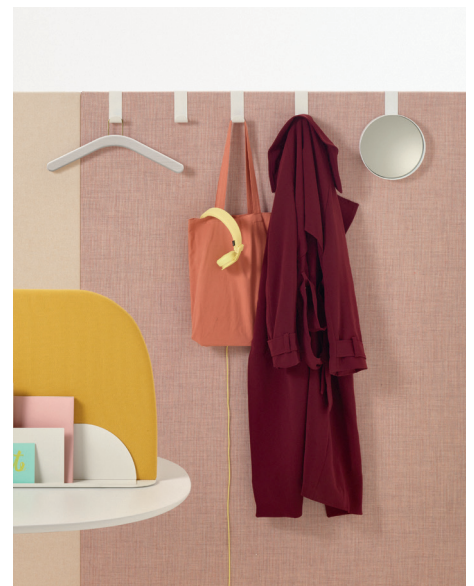
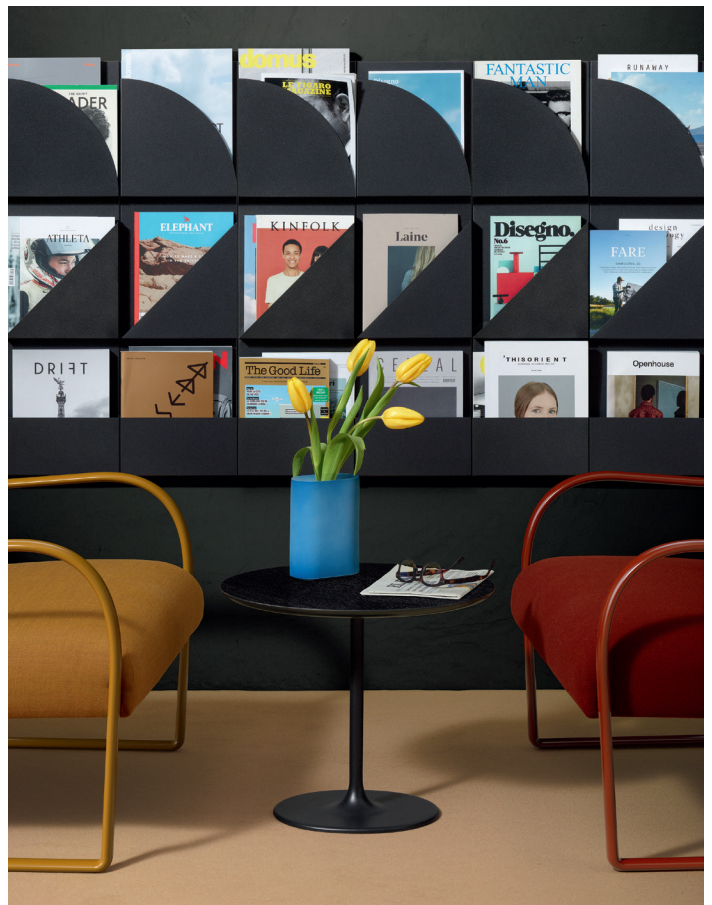
Arper

The Paravan Mood collection is a new set of accessories for modular panels of the same name. This set of functional accessories with a bold aesthetic is perfect for organizing and personalizing office spaces. The simple shapes are joined to create unique decorative objects.

Paravan Mood's collection organizes spaces that can be personalized with a range of accessories from a whiteboard, hook, mirror, wall-mount or panel-mount magazine holder, slim-shelf, socket tower or desk panel. Designed to enhance personalized spaces, the accessories complement Paravan panels' sculptural form in a seamless and highly functional manner. The magazine holder and slim-line shelf are designed to be easily mounted onto Paravan Panels. Paravan Mood's desk panels come in three widths that are upholstered and can be personalized with a range of fabric finishes to choose from. These features can be mixed and matched to best suit the needs of its habitat.

Paravan Moods integrative design provides a solution in delineating a space without compromising aesthetics and functionality. The collection is ideal for office spaces, lounge areas, meeting areas, restaurants, learning spaces or even residential uses.

Furnishings Accessories



Zauben

Design Differently

“Our living designs are conscious of the impact it has on buildings, people, and the environment.”



Zauben

Company Bio

Zauben is reimagining how we think and interact with nature. Headquartered in Chicago, Zauben is a living wall and green roof company breathing life back into our cities. Zauben creates environmentally friendly spaces with sustainable green products and combines the beauty of nature with innovative IoT sensor technology to monitor plant care.

zauben.com/modelz



Model Z by Zauben

Product Spotlight

Faced with the challenges of climate change and other global environmental concerns, architects are more aware than ever of their responsibility to design more sustainable, eco-conscious spaces. But while the designers tend to be on board with the drive for greener architecture, their clients also need convincing — which is where brands like Zauben come in. Thanks to the stunning appearance of their living wall systems, it's infinitely easier to persuade developers and the general public to embrace biophilic design, especially with products such as the Model Z.

Thanks to its innovative design and long-lasting qualities, the Model Z was awarded the 2020 Juror's Choice A+Award in the Building Systems-Sustainable Design Products category. Zach Smith, Founder of Zauben, was thrilled to accept the honor. "To be recognized as an A+Award Winner validates what our design team set out to do — to make the world a greener place," said Smith.

"To be recognized as an A+Award Winner validates what our design team set out to do — to make the world a greener place."

“We streamlined the process by developing a turnkey living wall product that architects can spec, order, and have our team deliver and install onsite.”



Model Z by Zauben

Product Spotlight (cont.)

Zauben's designs are driven by a desire to build greater "green-to-gray" relationships in our increasingly urbanized world. When asked what inspired the Model Z, Zauben's founder spoke about blurring the boundary between inside and outside, bringing nature in. "We wanted to create a product that celebrated sustainability while reconnecting us to nature and our environment," explained Smith. "Our living designs are conscious of the impact it has on buildings, people, and the environment."

The result is a richly verdant product that serves to enliven any space. But the Model Z is more than an aesthetic nod to nature — its sustainable qualities go deep. "We wanted to design a product that makes an impact on the world, not the planet," said Smith. "To do so, we developed the Model Z with Cradle to Cradle certified materials that contribute to LEED v4 and WELL certifications. We use hydroponic technology that conserves 75% less water than plants grown in soil, self-irrigates, and includes moisture sensors monitored by our plant care app, making sure your plants are healthy."

Model Z is markedly smarter than conventional living walls, too. "One of the most challenging design features was developing IoT sensors that can monitor plant performance," explained Smith. "Our team set out to build not just the world's most sustainable living wall but the most intelligent. We designed sensors that can measure real-time moisture levels, light levels, humidity, and estimate air quality."

While the luscious appearance and environmental benefits of green walls make them popular, the challenges associated with installation can put many clients off. "Today, living walls require onsite construction, plumbing, lighting, and electric work," said Smith. However, integrating the Model Z requires much less hassle thanks to Zauben: "We streamlined the process by developing a turnkey living wall product that architects can spec, order, and have our team deliver and install onsite."

While it has achieved great success in 2020, Zauben continues its drive for innovation to provide clients with even better products. Smith is aiming to build more technologically advanced versions of the Model Z, allowing it to integrate seamlessly with the architecture of the future. "We're evolving our product to integrate with smart home devices and property management systems to share reports and updates on indoor air quality," he said.

With continual innovations on the way, Zauben's Model Z could be just the first step on the road to a green revolution in architecture.



WINNER

jury
popular choice

PRODUCT INFO

stylexseating.com

Free Address

Stylex

The Free Address modular furniture system offers a single, integrated solution for today's wide variety of work styles, while maximizing space and bringing people together. Designed for open-plan schemes, this next-generation system exists to improve the spaces in which we work. Whether it's used for heads-down focus, team collaboration, quick touchdowns, or impromptu lunch gatherings, Free Address provides a dynamic, spontaneous environment that encourages collaboration and fosters community. Free Address is composed of casual task settings with seating fixed at a supportive 18-inch guest height in combination with highly accessible, convenient work surfaces.

Every detail of Free Address's agile design effortlessly accommodates a wide range of workstyles: cubbies for short-term convenience, lockers for longer-term work, desks for focused tasks, and a lounging area for gathering and sharing ideas. Comfortable settings like Free Address physically and psychologically promote a sense of well-being and effectively serve as an extension of the classroom or simply an accommodating gathering place.

From hotels to corporate lobbies, successful hospitality settings are centered around the guest. Everybody needs a comfortable place to touch down and plug in — or relax and unplug. Free Address's design supports all these activities in the most welcoming way.





WINNER

jury
popular choice

PRODUCT INFO

iibyv.com

Masque Collection for Suite 22 Contract

REPUBLIC OF II BY IV

The source of inspiration for the Masque Collection is a modest piece of fencing equipment — the fencing mask. Unassuming in its nature, this essential part of the fencing uniform displays qualities of strength, protection, a level of concealment and a somewhat mysterious play of light and shadow on the face of the wearer.

Combining sophistication and comfort with classic materials and sculptural modern shapes, the concept was brought to life in a Collection comprised of four styles: a dining chair, barstool, a high back and a low back lounge chair.

The designers developed a series of drawings of elegant framework for multiple variations on the initial concept. Working with a multi-generational artisan workshop in Italy known for producing the highest quality Italian furniture, prototype frames were created, reviewed and finalized.

The Collection is offered in solid ash frames and three finishes: white washed, matte black and walnut stained, complemented by natural or black caning. Metal details are available in brass, nickel, gunmetal, bronze and matte black.

Respecting the history and refinement of fencing traditions, each piece is crafted using leading-edge CNC machining and a century-old, hand-caning tradition, resulting in exactly the balance of transparency and privacy the designers had envisioned.





WINNER

jury

popular choice

PRODUCT INFO

hypedome.com

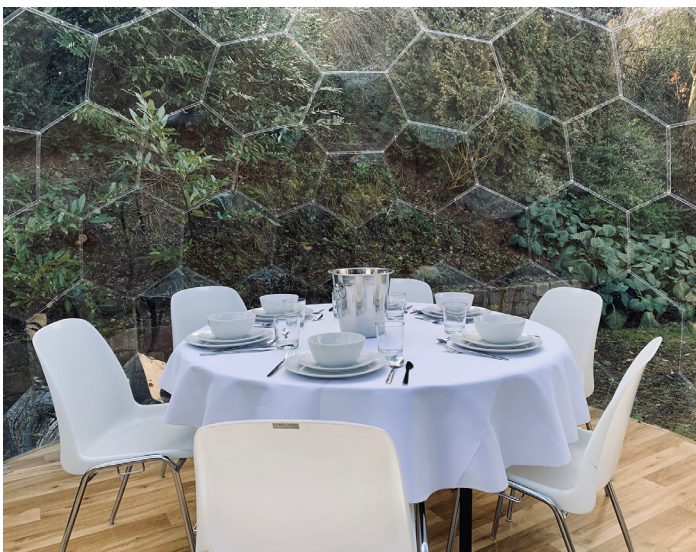
Hypedome

Hypedome

Hypedome transforms outdoor spaces into additional rooms that blend with their surroundings. It's a truly unique space that shelters from the elements and enables the enjoyment of the outdoors all year long. Made out of more than 100 crystal-clear, hexagonal panels, it quickly becomes a focal point of any garden.

It can be used as a stylish seating area, a garden gym, a spot for yoga or meditation, a playhouse, a hot-tub enclosure, or even as a greenhouse. Hypedome is weather-resistant to rain, wind, snow and it is also UV protected. It can be used in any climate and during any weather. Made out of solid polycarbonate, it is also extremely rigid and durable, designed to withstand violent winds.

Hypedome is available as a DIY kit for self-assembly and comes with everything included — parts, tools, assembly instructions and a cleaning kit. It also offers a wide range of bespoke accessories, including openable windows, shade-sails, insulated panels, and solar-powered fans for easy climate control. Modular decking, ground covers, and impact floors are available too and allow for the creation of beautiful multi-purpose spaces in less than half a day.





WINNER

popular choice

PRODUCT INFO

fcstudio.com

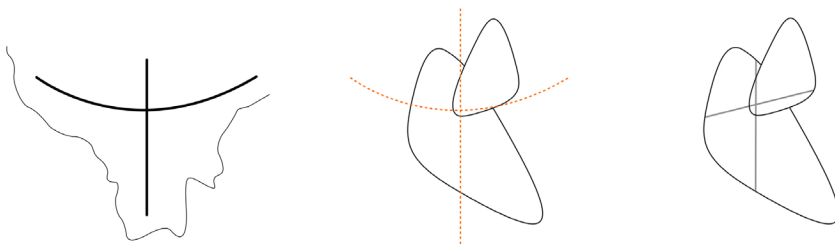
Brasilia Coffee Table

FCstudio

In 1960 the city of Brasilia — the capital of Brazil — was inaugurated. With the urban plan designed by Lucio Costa and architecture designed by Oscar Niemeyer, the proposal was marked by two orthogonal axes that resemble a cross or an airplane. This concept can be seen in the historical plans.

Inspired by the urban design of this city, the tables are also marked by two axes. In our design, there are two brass fillets embedded in the larger and smaller tabletops, which are made of marble and steel, respectively.

The two different materials used in the tabletops make clear that they are independent pieces that can be repositioned according to each need. However, when put in a certain configuration, the fillets overlap from one table to the other, forming the ideal position, just like in the city of Brasilia. This project is a flexible composition which takes into account the local history of the country.





WINNER

jury

PRODUCT INFO

rockwellgroup.com

Sage by David Rockwell for Benchmark

ROCKWELL GROUP

Sage by David Rockwell began with a question: What does a person need to feel comfortable both at home and at work? Adaptability, privacy and wellness are key to establishing a sense of well-being in your personal space. Working closely with Benchmark and using sustainable, non-toxic materials and finishes, Rockwell Group's collection is optimized for the workplace, but would feel at home in a hospitality or residential space. Using biophilic design as a starting point, the collection features flexible pieces, many of which transform at the touch of a button or toss of a pillow to accommodate multiple uses.

The forms of our seating and tables are soft, supple and supportive, emphasizing natural wood finishes and sustainable sourced upholstery materials. The pieces are made of a combination of ash and sycamore wood with blackened finished copper accent detailing and natural upholstery in layers of coconut fiber, natural latex, recycled shredded denim and lamb's wool.





WINNER

popular choice

PRODUCT INFO

uxuadas.com

POLTRONA U

UXUA DAS

The Poltrona U chair was first produced as a prototype in 2019 from a single sheet of 100-square-meter navy plywood leftover from a construction site.

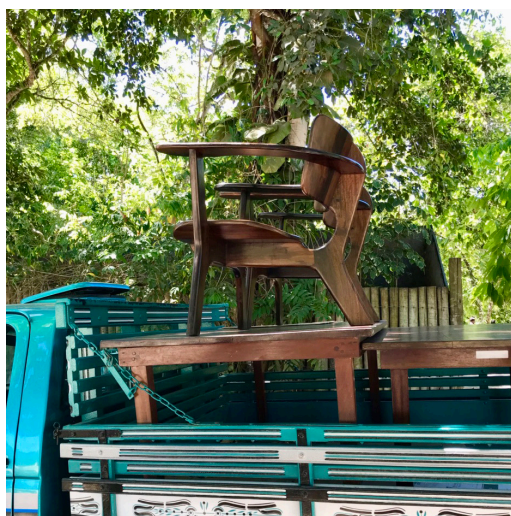
The final production is eight exclusive pieces in demolition woods of noble quality typically from old Bahian farms, louro preto, braun or muiracatiara.

The chair is designed to fit its user in a soft hug of comfort, with a slightly higher than normal height giving a totally relaxing feel.

Inspiration comes from designer Wilbert Das's confessed obsession with three-legged chairs, and his appreciation of the simple and easy construction of early 1960s plywood furniture, but in this case made in reclaimed tropical woods.

UXUA DAS is a custom decor collection inspired by designer Wilbert Das's 15-year love affair with Trancoso in the South of Bahia. The owner of the renowned boutique, spa hotel there, UXUA CASA, is a former fashion designer who spent nearly two decades as creative director of the Italian label Diesel before leaving to dedicate himself to sustainable, tropical architecture, design and environmental projects.

The UXUA DAS formula merges love of tradition with a passion for experimentation, and a lifelong habit of Wilbert to join people of diverse cultures in creative pursuits.





WINNER

jury

PRODUCT INFO

visionnaire-home.com

Camden Armchair

Visionnaire

Visionnaire, founded by IPE in Bologna since 1959, is a meta-luxury brand of reference in the sector of interior design made in Italy. The brand operates in over 55 countries, thanks to over 30 exclusive mono-brand stores and a network of department store and multibrand showrooms all over the world.

Since 2004, Visionnaire has formulated a distinctive style, based on lively experimentation of materials, volumes of unexpected poise and inimitable motifs that reveal the totally Italian background of the company. Thanks to collaboration with a team of eclectic, visionary Italian and foreign designers, the company is an ideal partner for bespoke proposals in residential and contract applications.

Camden Armchair, designed by Mauro Lipparini, bears witness to this philosophy. The relationship between the exoskeleton and the full presence of the volumes is based on and contrasts with the presence of voids — not missing gaps but a new way of organizing graphic compositional proportions with effects of light and shadow. The individual compositions thus resemble complex natural settings. The outer shell, taut and round, is supported by a solid pore-wood frame that fits perfectly into the back portion of the shell covered in leather. The padded part offers a soft welcome that can be in leather or fabric.





WINNER

popular choice

PRODUCT INFO

nativetrailshome.com

Mendocino

Native Trails

A masterful blend of contemporary design with luxurious textures characterizes the impressive new Mendocino NativeStone Freestanding Bathtub. Made of a gorgeous, sustainable, groundbreaking cement- and jute- fiber mixture called NativeStone, the Mendocino Tub is available in four finishes: Ash, a light, natural gray color with beautiful natural mottling; Slate, a rich dark gray; Pearl, a luminescent cream color; and Earth, a warm, natural brown-gray. The tub's thick walls provide insulation to ensure that a hot, deep, relaxing soak will last and last. Sustainably produced and earth-friendly, Mendocino, the latest addition to the NativeStone bathtub collection, is exceptional in its lighter weight (about 40% lighter than standard concrete), and features one-of-a-kind coloration, as well as extraordinary stain, scratch and crack resistance.





WINNER

jury

PRODUCT INFO

vikingrange.com

48" Limited Edition Dual Fuel Range - VDR7482

Viking Range, LLC

The Cast Black & Rose Gold Limited Edition 7 Series Range is the first in a series of limited edition releases from Viking. Exclusive features include Elevation Burners that efficiently deliver heat to any size cookware, a VariSimmer Setting that provides gentle, even simmering, a SureSpark Ignition System ensuring automatic ignition and a GentleClose Door for dampened closing.

Other features include BlackChrome Knobs with CoolLit LED backlighting to highlight the rose gold color, TruGlide Full Extension Racks for safer and easier removal of bakeware, a GourmetGlo Infrared Glass Broiler to provide intense heat to lock in savory juices, and a concealed 10-pass dual bake element that provides precise temperature control. This oven also includes Rapid Ready Preheat, which provides one of the fastest preheat times so your oven is ready to begin cooking when you are.

Additional Features include a thermostatically controlled reversible cast iron griddle/grill and a Patent Pending StayCool Trough Handle and grease containment system. The patented Vari-Speed Dual Flow Convection System has the largest fan in the industry. There are 12 high-performance cooking modes and the oven is self-cleaning.

Viking will only build 110 of these exclusive ranges as it will appeal to an elite group of consumers and professionals with a forward-thinking design style.

Kitchen & Bath Appliances





WINNER

jury

PRODUCT INFO

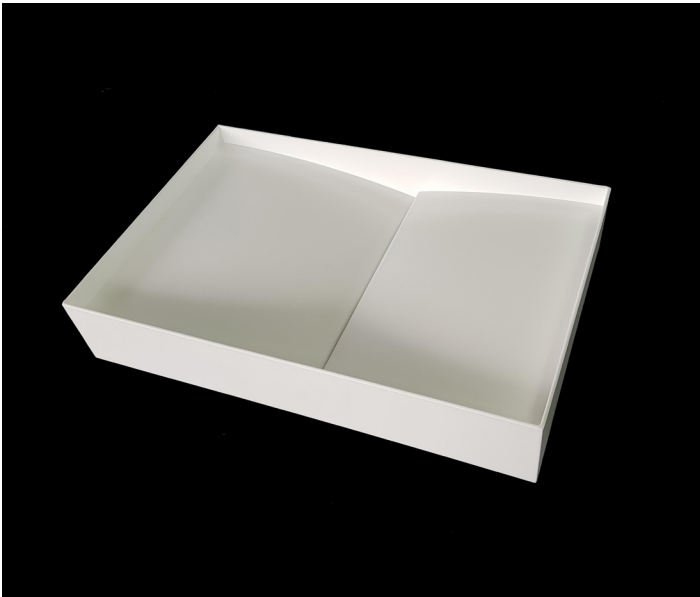
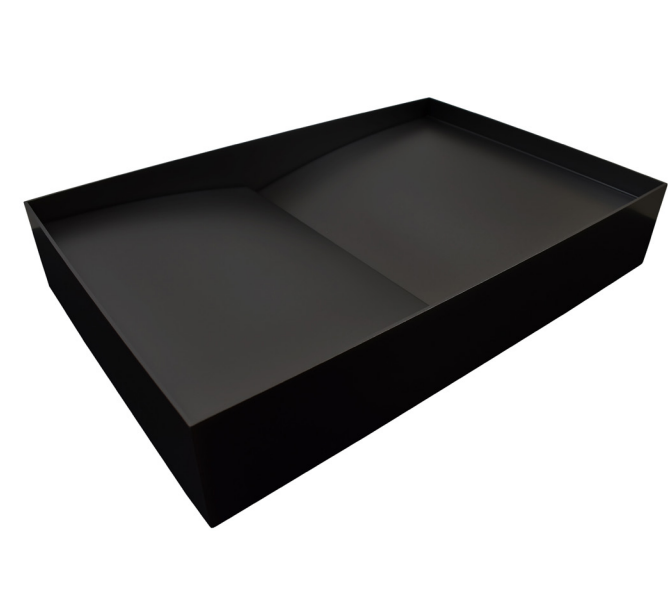
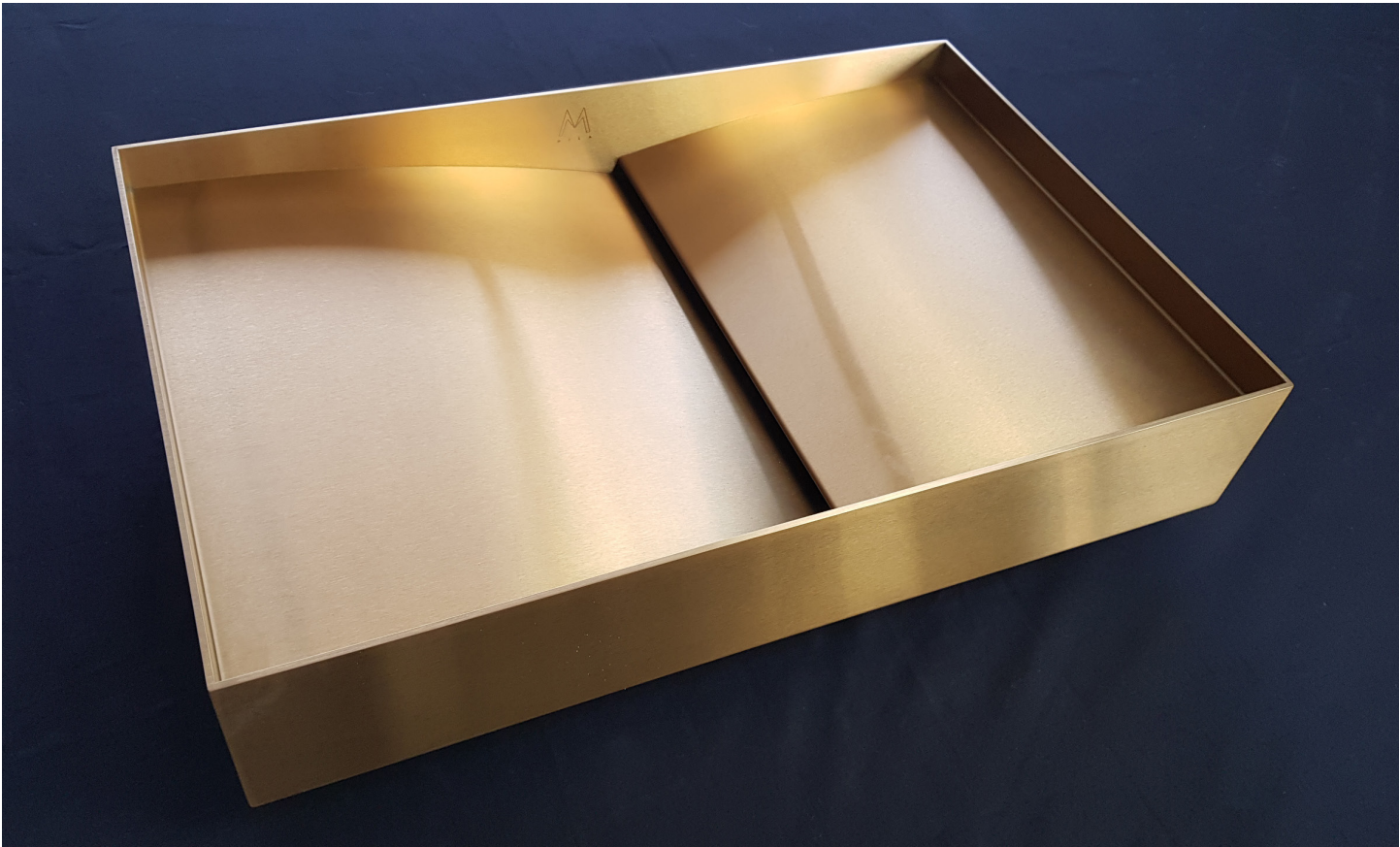
mila-international.com

Batlló Bath Sink

Mila International

Mila International's product designers traveled the world for inspiration to design their new line of top-mount bathroom sinks and found it studying the work of the Architect Antoni Gaudí in Barcelona, Spain. The Batlló sink was inspired by the beautiful lines in Mr. Gaudí's Casa Batlló, an icon of Barcelona. While the Güell bath sink was defined by Park Güell, a truly stunning location known for a perfect harmony of nature and architecture. The water in the Güell sink flows beautifully into a linear drain, moving like water in nature.

The Batlló, Vessel and Güell styles were created with smooth flowing lines that bring a naturally luxurious feel to any bathroom. The new top-mount bathroom sink line from Mila International features a distinctive linear drain that breaks with traditional drain designs showcasing the beauty and style of each model. These sinks are manufactured with 16 gauge, 1.5 mm 304 stainless steel and are available in Mila's most popular finishes: PVD Gold, Rose Gold, Graphite, Satin Brushed Stainless Steel and Powder Coat White.





WINNER

popular choice

PRODUCT INFO

valcucine.com

Logica Celata

Gabriele Centazzo / Valcucine SPA

The design of the Logica Celata kitchen system is the end product of brilliant research into space optimization and reinventing ergonomics. The configuration, which is customizable, is equipped with solutions and accessories designed for specific requirements. Everything is ready to be used as efficiently as possible and then disappear completely when no longer needed. Once closed, this system becomes an elegant piece of furniture.

The kitchen is available in two sizes and designed by paying special attention to ergonomics as well as to space optimization. The kitchen is available in gloss or matte glass, and also with "Vitrum Arte," which are designs that can be transferred to glass using an inlay technique. This makes each arrangement completely unique.

Kitchen & Bath Millwork & Cabinetry



UXUA
D · A · S



UXUA D.A.S.

Company Bio

“Working with ancient wood actually is wonderful — thanks to the maturity of the material, you don’t have any issues with movement in the wood.”

The D.A.S. in the UXUA D.A.S. name is a direct reference to its founder, the designer Wilbert Das, while also serving as an acronym for design / architecture / style - the three components output produced by the company.

UXUA D.A.S.'s custom decor collection is inspired by Wilbert's 15-year love affair with the village of Trancoso in the south of Brazil's Bahia state. The founder of the renowned boutique, spa hotel UXUA CASA is a former fashion designer who spent nearly 2-decades as Creative Director of Italian label Diesel before leaving Europe to dedicate himself to sustainable, tropical architecture and design and environmental projects.

Wilbert enjoys a collaborative approach in his design work, engaging the village's artisans using honest, local materials such as wood, wicker, and clay with a big emphasis on recycling. Reclaimed materials are also sourced from Wilbert and his team's international travels such as vintage linens from Italy and antique silks from India.

Production of UXUA D.A.S is all kilometer zero.

The UXUA D.A.S formula merges love of tradition with passion for experimentation, and a lifelong habit of Wilbert to join people of diverse cultures in creative pursuits. “one of the biggest privileges in my years working as a Creative Director in Europe was being able to recruit young talents from across the world and put them beside Italian craftsman, and in Brazil I've loved doing very much the same thing, introducing designers like the Dutchman Peter Kempkens to live and work around Trancoso's native craftspeople, remarkable things can be born in this way and everyone is enriched by it.”

uxuadas.com



Poltrona U Chair by UXUA

Product Spotlight

When you think of furniture made from salvaged materials, you might envision something a little rough around the edges — after all, reclaimed materials have usually been through a lot before taking on their new form as a chair, sideboard or table. However, the Poltrona U chair defies expectation, sporting smooth curves and a rich, chocolate brown finish fit for the most sophisticated of contemporary interiors.

Handcrafted by UXUA D.A.S. and made from reclaimed hardwood in Trancoso, Brazil, Poltrona U captured the imagination of the public in the A+Awards, scooping the Popular Choice Award in the Residential Seating category. Designer Wilbert Das is hopeful the accolade will help raise awareness of the material's unique qualities, as well as spotlighting the talented local craftspeople that helped bring it to life. "Getting an A+Award will help in calling attention to the work being done using non-industrial processes, mixing cultures and influences, and in particular by laboring side-by-side with artisans," said Das. "The award adds to Trancoso's credentials and reputation, and can only help us expand on what we do in the future."

"If you look at the seat, it's actually the exact form which remains after shaping the U- armrest. Then, the back-rest of the chair is made from the material left over after cutting out the front legs."

*“Reclaimed
woods are
in finite
quantities,
and getting
harder to find
all the time.”*



Poltrona U Chair by UXUA

Product Spotlight (cont.)

Looking at the Poltrona U, it's not hard to understand its popularity — it is a truly beautiful object. Its backstory, though, is arguably even more appealing: The materials used to make the chair have been retrieved from a plethora of local sources. "The limited series is in demolition woods of noble quality, typically old beams from Bahian farms, canela preto, muiracatiara, or braúna, which is one of Brazil's darkest woods," explained Das. "Working with ancient wood actually is wonderful — thanks to the maturity of the material, you don't have any issues with movement in the wood."

As well as aesthetics and craftsmanship, ergonomics were carefully considered when designing the chair. "The seating for lounge chairs is often too low — especially the Brazilian classics," said Das. "In this case, I wanted to make something in between a sitting and a lounge chair with a totally embracing feeling. With a slightly higher-than-normal seat, it has a very relaxing feel, designed to fit the user in a soft hug of comfort."

The elegant form of the chair was actually inspired by the humble art of flat-pack furniture design. "It was first created as a prototype in 2019 from a single sheet of navy plywood, leftover from a construction site," said Das. "We loved the result, and that we came up with such an efficient design. If you look at the seat, it's actually the exact form which remains after shaping the U- armrest. Then, the back-rest of the chair is made from the material left over after cutting out the front legs." This efficiency fits with the sustainable approach of UXUA, which prides itself on using low impact materials and manufacturing processes.

Ultimately, the most important qualities of the chair lie in the "totally authentic origins of the piece", as Das explains. "The chairs are made by hand in Trancoso, involving a lot of genuine human interaction between my team and locals who source the old woods, as well as those who sculpt it. This is a slow and low-volume production, with a really nice origin story, the kind of thing I believe the world craves now."

Paradoxically, UXUA's greatest quality also forms one of its greatest challenges. The brand harnesses materials that are increasingly scarce, and it's something that Das regularly thinks about. "Reclaimed woods are in finite quantities, and getting harder to find all the time," said the designer. "Each time we finish a chair we kind of think 'ok great, we got another one done, how will we be able to do the next?' This has led us to think about more sustainable ways we can source wood, and we've been in some really interesting talks about this with possible partners from around Brazil!"

As UXUA's sourcing methods continue to evolve in tandem with their designs, it will be fascinating to see the beautiful furniture emerging from this creative brand in the coming years.



WINNER

jury

PRODUCT INFO

henrybuilt.com

Space Theory

Henrybuilt

Space Theory, a custom kitchen product and systems solution, was founded on the principle of providing high-quality, design-oriented kitchens at an accessible cost. Created by Henrybuilt CEO and founder Scott Hudson, they noticed there was a gap in the kitchen design market when looking at mid-range customized options. Wanting to provide aesthetically pleasing yet high-performance kitchens to a wider consumer audience, Scott worked with the Henrybuilt production team to launch Space Theory.

While most companies curtail the material quality in order to reduce costs, Space Theory utilizes less-expensive offerings, such as anodized aluminum, acrylic and laminates, which still retain the quality that Henrybuilt systems are known for. To ensure long-lasting wooden cabinetry and panels, elements are finished with 2K polyurethane, an incredibly durable wood finish. Flexibility is also a key characteristic of Space Theory kitchen products.

A defining element of Space Theory is the accompanying Design Engine technology. Developed in-house specifically for Space Theory, the software allows users to confidently and independently design a custom kitchen. The software provides a “drag-and-drop” interface that allows users to schematically lay out their desired kitchen. Once consultations are completed, the kitchen is then shipped pre-assembled, arriving with fronts and pulls attached.

Kitchen & Bath Millwork & Cabinetry





WINNER

jury
popular choice

PRODUCT INFO

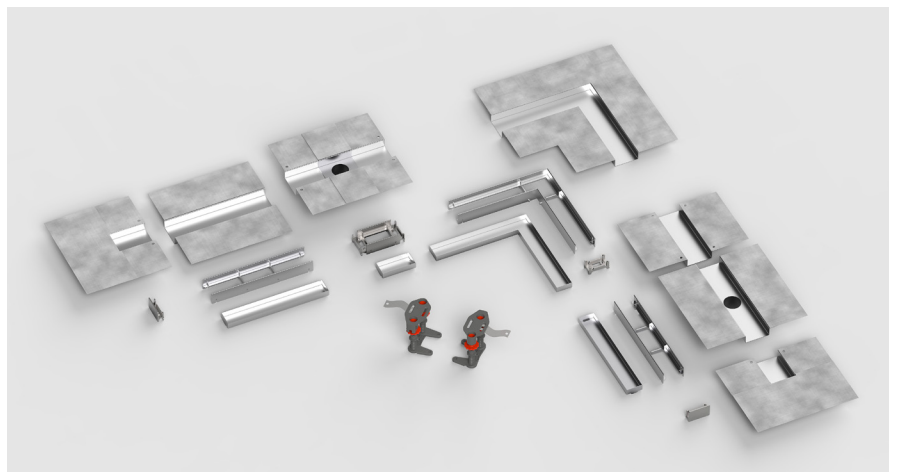
easydrainusa.com

Easy Drain Pool Line

Easy Sanitary Solutions

Easy Sanitary Solutions has more than 20 years of experience in residential water drainage. In addition to our Easy Drain shower drains, a special drain is developed for pools and spas. Inspired by our popular Modulo TAF series, this pool drain comprises a height-adjustable frame, waterproofing membrane and tileable grate. Because of its predefined, customizable-length parts, the Pool Line is easy to install around any type of rectangular pool.

This product includes a linear shower drain with a pre-assembled waterproofing membrane and a height-adjustable frame to match tile thickness of the surrounding floor. The product includes an easy to install modular system, as well as corner, linear and connection parts. The custom length parts and high quality stainless steel (AISI 316) add to the overall feeling of quality.





WINNER

popular choice

PRODUCT INFO

qzurbanfurniture.com

Whale Tail bench

OZ Urban Furniture

This piece of urban furniture is inspired by marine life, and capable of awakening emotions in urban and natural environments. An elegant and sober bench, the organic shapes not only fulfill the function of a seat, but also provide an aesthetic value when it is placed in the urban space of seafronts, ports, parks, squares, streets and boulevards.

When the bench is not occupied, its soft, undulating shapes make it a sculptural element. Its minimalist, modern and functional design has been reduced to the minimum expression: a single support. It is available in three finishes with fiberglass between 8 and 12 mm. It also has a reinforced interior with a high density, compact-laminated wood frame. This product has a concrete finish reinforced with fibers of very high performance and great plasticity, which gives it an excellent rigidity.

The base of the piece is triangular in shape and with a maximum side of 160 mm, it is supported or recessed to the floor by an AISI 304 stainless-steel anchor plate, satin finish. The available colors are glitter white, fluorescent green, sky blue, overseas blue and anthracite gray. The dimensions of the seat are length: 800 mm, depth: 550 mm, and height: 450 mm.





WINNER

jury

PRODUCT INFO

landscapeforms.com

Motive

Landscape Forms

Motive is a sophisticated family of lights that blurs the line between indoor and outdoor lighting to create out-of-the-ordinary settings. Motive celebrates the beauty of illumination and its interaction with architecture, objects and space. The comprehensive family includes area lights, a path light, a wall-mounted light, a pendant light and a dramatic outdoor floor lamp. Each offers superior performance and its own visual experience. The luminaire's neutral sculptural form addresses an array of applications for buildings and grounds, pathways, social spaces and high-profile areas such as art installations and entrances.

Motive lights employ a hidden light source and, depending on the fixture, clear or diffused lenses and one to three distribution patterns. Their technologically advanced LED configuration produces smooth, even light with low glare. The cast aluminum lights are available in a full color palette of Landscape Forms' proprietary powder-coat finish.





WINNER

popular choice

PRODUCT INFO

skyfactory.com

Aperture SkyCeiling

Sky Factory

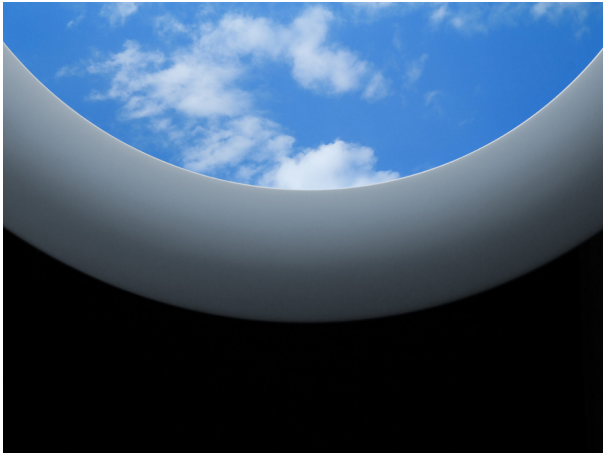
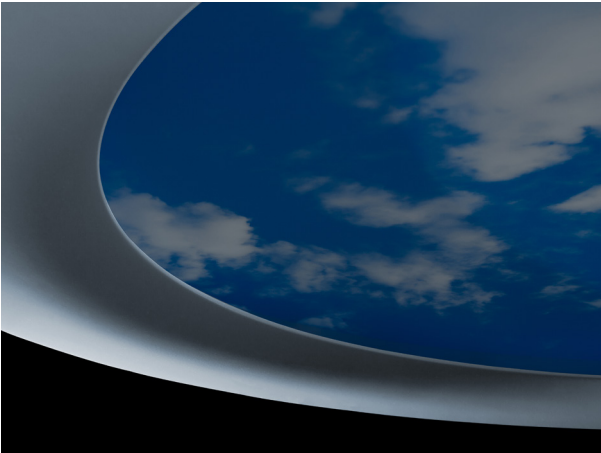
The Aperture SkyCeiling is an unencumbered virtual portal to open skies. It uniquely modifies our perception of customary planar relationships through a multisensory oculus that heightens the spatial plausibility of open sky. Aperture generates its potent biophilic illusion by making three unexpected material transitions.

First, Aperture's internal structure forgoes the support grid, usually positioned between SkyTiles (image panels), in favor of an unobstructed view of the entire circular or elliptical opening.

The absence of a grid creates ambiguity for the mind as to whether or not a surface (the SkyTile) actually exists, thereby supporting perception of deep space. Second, Aperture separates the perimeter frame from the non-reflective SkyTile surface, creating a vacant interstice.

When the sky image is viewed from any off-center perspective, it appears as a thin, crescent-shaped gap. However, when viewed standing directly underneath, Aperture's vacant interstice — subtly visible by virtue of our binocular vision — confounds the viewer's ability to recognize and locate a precise distance to the SkyTile surface.

Third, Aperture features a hidden mechanical boundary. The trim side wall has a reflective surface that prevents the eye from perceiving a distinct edge to the sky image.





WINNER

jury

PRODUCT INFO

focalpointlights.com

Seem 1 Acoustic Trio

Focal Point

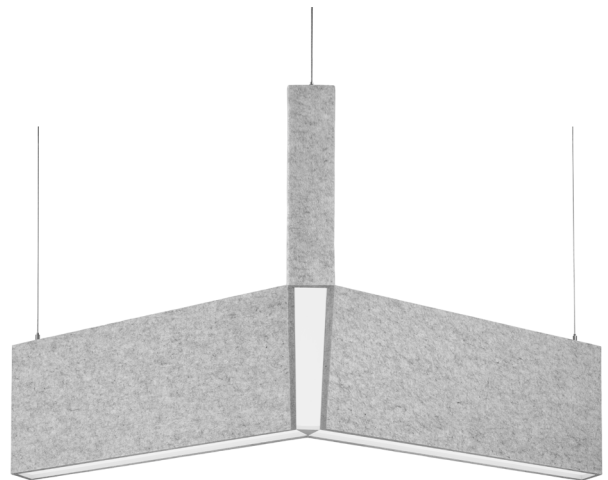
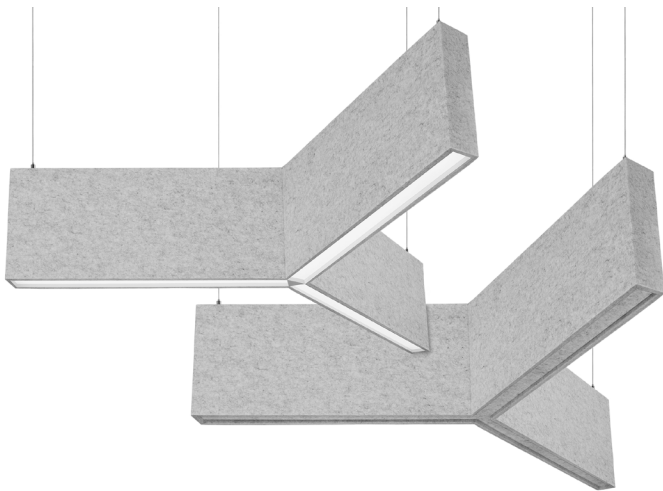
Seem 1 Acoustic Trio is a Y-shaped sound-absorbing luminaire thoughtfully designed to address high noise levels and reverberation issues in open, multi-functional spaces while delivering optimal illumination.

Its clean design with vertical aircraft cable suspension minimizes ceiling clutter while a seamless PET housing, made of 100% polyester containing up to 50% recycled plastic bottles, elevates its modern appearance. The housing material also contributes to reducing its environmental impact, provides an ASTM E-84 Class A/CAN ULC S102 firing rating and is moisture resistant.

Its sound absorbing PET housing, unique Y shape, and AirCore technology help maximize sound absorption to deliver up to 40% more sound absorption than a linear baffle with the same surface area. The patent pending AirCore technology also minimizes ecological impact and provides a lightweight structure that eases installation.

Seem 1 Acoustic Trio can be specified in 4-foot and 6-foot diameters with direct and indirect light distributions or unlit. Housing heights of 8 inches, 12 inches, and 16 inches and 30 material colors help meet the needs of diverse interior spaces.

The flexible luminaire can be used as a stand-alone pendant, clustered, or as part of an integrated ceiling system with Seem 1 Acoustic linear luminaires and baffles.





WINNER

jury
popular choice

PRODUCT INFO

usa.flos.com

Noctambule

FLOS with Konstantin Grcic

Noctambule is a new collection of blown glass lamps designed by the world acclaimed German designer, Konstantin Grcic. "Noctambule," meaning night owl or reveller, is the inspiration behind this collection. Like night owls, this collection is mostly invisible during the day but comes alive in the nighttime. During the day when unlit, Noctambule almost blends into a room due to the transparent body of blown-glass modules. At night, Noctambule makes its presence known when it comes alive and transforms into gorgeous lamps. The shape of this collection is illuminated by the strip LED hosted at the modules' base and connecting rings. This creates a diffused light that gives a fascinating, magical glow.

This versatile collection has the ability to interconnect up to six modules to create a stunning lighting column or chandelier. This collection is configurable as a hanging pendant or standing lamp with extra elements such as a glass dome or cone-shaped head.





WINNER

popular choice

PRODUCT INFO

nanawall.com

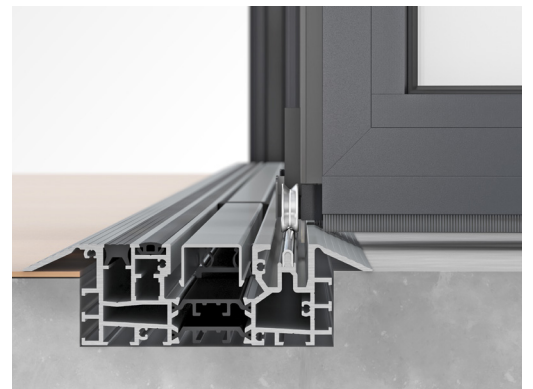
SL84

NanaWall Systems

The SL84 provides the slimmest and most thermally efficient aluminum framed system bi-fold door system. SL84 aesthetics feature an extremely streamlined appearance with minimal exposed hardware and a slim aluminum frame — the intersection of two folding panels is a mere 3.8 inches. Panels are capable of heights up to 11 feet 6 inches and offer the possibility of wider openings with the integration of FourFold and SixFold Panel Sets that move and stack to either side of the opening, providing the ultimate in layout flexibility. This system is available in inswing or outswing configurations and can accommodate open-corner designs.

This product includes the slimmest and most thermally efficient aluminum-framed bifold door, along with Fourfold and Sixfold panel sets capable of extremely wide openings. A two-point contact of each wheel to floor track ensures quiet and smooth sliding. A concealed panel alignment means less exposed panel hinges and a consistent seal between the panels meets higher wind loads. There are three sill options with a high heel resistant feature and a multipurpose frame insert conceals low voltage wiring for security. Lastly, a patent-pending adjustment feature adjusts width for construction tolerance.

Openings Doors & Door Hardware





WINNER

jury

PRODUCT INFO

assaabloydooraccessories.us

Rockwood PDU8500 Architectural Storefront Panic Device

ASSA ABLOY

The Rockwood PDU8500 Architectural Storefront Panic device emanates flawless design while safeguarding storefronts. Incorporating a patent-pending flat security latch, the PDU8500 will ensure doors remain locked and secure when business is closed. This beautifully crafted, top latching panic device has an engraved push area and boundary grooves for enhanced visibility and tactility for a quick and easy exit. To suppress bouncing in the door, the actuator assembly contains a design patented dampener.

The PDU8500 has an optional dogging device that holds the push bar into place during operating hours, and can be released at night so doors can be locked. It has keyed and non-keyed options, operates with manual or electric strikes, and is offered on medium or wide stile aluminum storefront doors. This panic device is ANSI/BHMA Grade 1, ADA compliant, and is available with six exterior pull options and a choice of architectural finishes.





WINNER

popular choice

PRODUCT INFO

kingspan.com

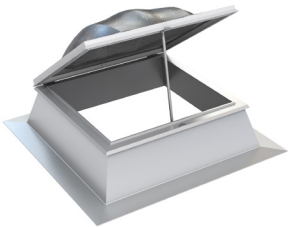
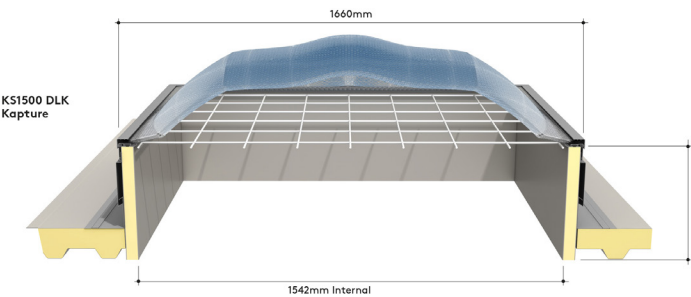
Kingspan Day-Lite Kapture Skylight

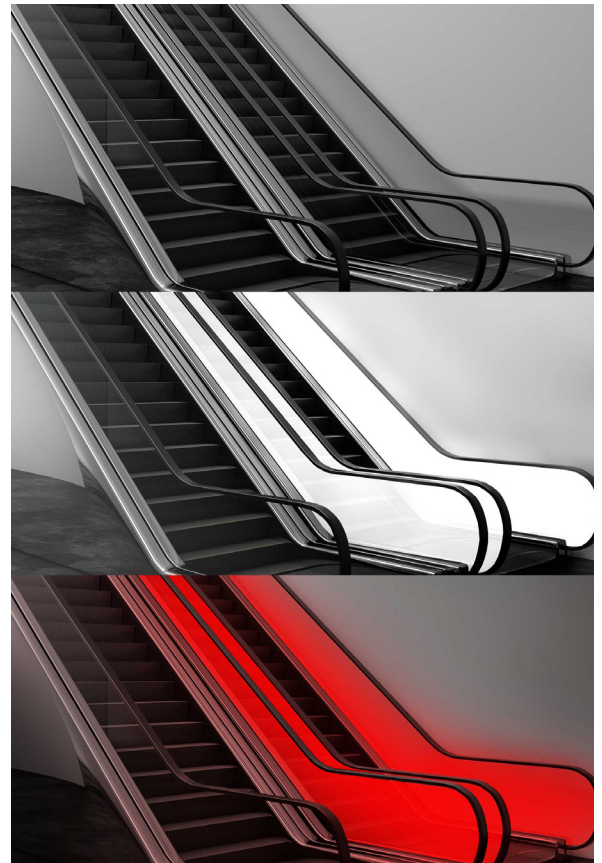
Kingspan Light + Air

With a world waking up to the realities of climate change, architects need to create designs which can bring our modern lives in harmony with the natural world. Conceived by a former architectural engineer, Kingspan Day-Lite Kapture Skylight was developed to deliver increased levels of natural light, helping to create buildings which are energy efficient and optimise user comfort.

It does this through a unique contoured profile devised to capture enhanced levels of daylight at low sun angles, meeting required light levels for more hours of the day than standard rooflights. In addition to reducing artificial lighting demand — and limiting operational emissions and costs — it also provides a greater connection between occupants and natural light rhythms, supporting good sleep, mood, productivity and overall well-being. This can achieve more credits under desirable voluntary building standards such as WELL, BREEAM and LEED. Regional profile variations are being created to meet the requirements of different climates.

The triple-glazed product contains layers of advanced, nano-prismatic technology which achieves 100% light diffusion and exceptional visual light transmission of between 81% and 83%. The glazing is UV resistant and its composition eliminates glare and hot spots, reducing heat gains and the need for mechanical cooling.





WINNER

jury

PRODUCT INFO

lightglass.net

LightGlass - the fusion of light & glass

Glass Technology GmbH

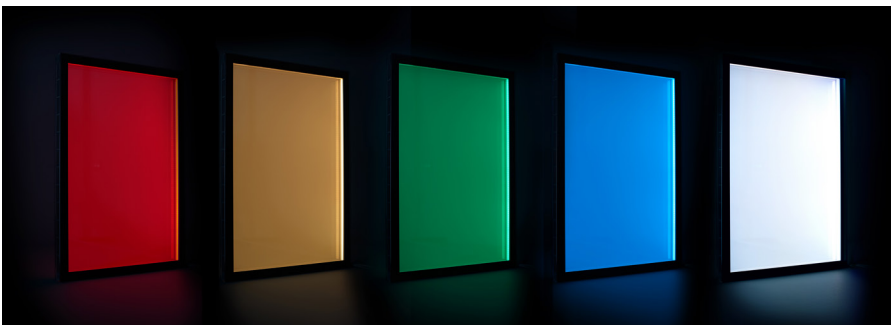
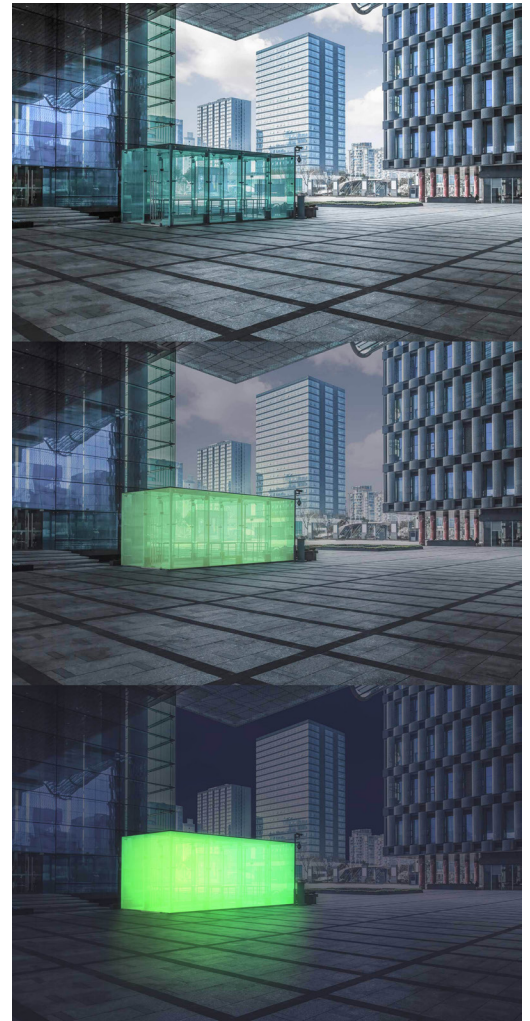
LIGHTGLASS is the first industrially available, self-luminous glass for the world market. LIGHTGLASS self-illuminating glass panels provide a light source anywhere glass already is — a smart and human-centric lighting solution for virtually any glassed-in opening or stand-alone structure.

Switched off, LIGHTGLASS has the appearance of normal multi-pane insulating glass, but when switched on it becomes a homogeneous, dimmable full-surface light source which provides up to 100% privacy. LIGHTGLASS could be integrated in any multi-pane glass units.

LIGHTGLASS is available in the following variations: Brilliant White, Human Centric Lighting and Rainbow (RGB-B). It can also be used for facades, outside or indoor use, in windows, skylights, doors, partitioning walls, residential buildings, shopfitting, hospitality and more.

LIGHTGLASS is compatible with most control applications and can easily be set up to run with mobile apps, various automated building protocols (DALI), most regulation protocols (DMX), external sensors (light, motion, proximity), and PC and laptops. It is also compatible with other smart home platforms such as Apple Home, Alexa, Osram Lightify, Bosch Smart Home, Ikea Tradfri and Loxone.

Openings Windows & Skylights





“Garden on the Wall is a pioneer in being the only preserved garden supplier in the world that has the Health Product Declaration.”



Garden on the Wall

Company Bio

Garden on the Wall® is an award-winning provider of turn-key, maintenance-free garden installations created with all natural preserved plants. Our gardens require no water, sunlight, or soil and retain their vibrant look for 7-10 years.

Garden on the Wall installations are the idyllic fulfilment of biophilic aspirations for any interior space.

Our mission is to elevate the spirit by bringing maintenance-free nature installation to imaginative design spaces. Sustainability is at the heart of our gardens, with plenty of credit contributions to LEED® v4.1, Well Building Standards and fitwel.

Garden on the Wall is the only furnisher and installer of No Upkeep Indoor Gardens with multiple awards from various design magazines (including Interior Design Best of Year, Special Mention in Best of Year by The Architect's Newspaper and Architizer A+ Awards) and listed in both Transparency Catalog and mindful Materials database.

gardenonthewall.com



Garden on the Wall

Product Spotlight

While biophilic design has long been a popular feature of sustainable, modern architecture, it has been something of a rarity indoors — until now. Thanks to some pioneering product development in the use of preserved plants, Garden on the Wall (GOTW) has transformed living walls from a high-maintenance luxury into an eminently viable option for a wide array of interior spaces. The company's turn-key, maintenance-free vertical gardens incorporate plant species that have been sustainably preserved at the peak of their freshness, and as such, require no water, misting or irrigation, nor even light or soil. Nevertheless, they retain a vibrant, luscious look and feel for 7-10 years across a range of interior environments.

These standout qualities earned GOTW multiple A+ Awards in 2020, scooping both the Jury and Popular Choice Awards in the Finishes-Wall & Wall Coverings category, as well as a Special Mention in the Finishes-Acoustics category. “We feel honored to receive these awards, recognizing our hard work and creativity, along with our

“We feel honored to receive these awards, recognizing our hard work and creativity, along with our commitment to the biophilic movement.”

“Studies show that biophilic design has significant physiological effects on humans.”



Garden on the Wall

Product Spotlight (cont.)

commitment to the biophilic movement,” said Miné Hisim, Founder and Managing Partner of Garden on the Wall. “Biophilia is often that magical, all-natural element that transforms an interior space into something different, unique, and memorable. We are proud to be acknowledged as a leader in this movement.”

As with any element of great architectural design, GOTW attributes much of its success to its collaborative process. The brand works with architects and designers from the outset of a project, ensuring the client's needs are met with a product that is seamlessly integrated with adjacent materials. “Our team is involved in all steps of the design & build process, from renderings to fabrication to installation & touch-up,” explained Hisim, “all the while collaborating closely with architects, interior designers, and general contractors.”

This hands-on approach means a high level of quality control is maintained through the process, and it shows. “Our garden installations have the unmatched visual and longevity standards in the market,” said Hisim. Looking more closely at one of GOTW's vertical gardens, it's not hard to understand why — every component is carefully considered and each species individually curated to achieve a stunning finished wall. “Even with garden composition is created with more than 50 prefabricated panels, we ensure that no single line or seam is visible. Attention to detail to guarantee perfection is not a task we take lightly,” said Hisim.

This attention to detail results in a garden of great beauty, but the pros of GOTW extend far beyond aesthetic appeal. The product is an industry leader when it comes to sustainability, with a range of certifications to provide architects with the confidence to specify. “Garden on the Wall is a pioneer in being the only preserved garden supplier in the world that has the Health Product Declaration (version 2.1.1), thereby enabling contributions to LEED® v4.1, The WELL Building Standard™ and fitwel®,” explained Hisim.

Successfully installing a vertical garden is something of an art form, and GOTW's team is highly adept with its medium. “The final composition is much like the finishing touches a painter makes with his brush strokes,” described Hisim. “This occurs at the display spaces where our team tiles the garden panels into the allocated spaces and works on every seam and edge to ensure each panel blends in seamlessly with the next. Meanwhile, our team adds foliage and moss elements to complete the composition's cohesion under the actual light conditions and viewing angles.”

The result is a rich, beautiful garden that enriches an environment visually, and provides continual health benefits to match. “Studies show that biophilic design has significant physiological effects on humans,” explained Hisim. “It stimulates cognitive function, lowers blood pressure, reduces stress levels, balances hormone levels and mood swings, and according to a recent Harvard study, may even make us live longer.”

These qualities will undoubtedly excite architects and clients alike, and given our increasingly urbanized world, it seems inevitable that we will see a proliferation of interior gardens moving forward. But what will the indoor green walls of the future look like? “We'll see a broadening variety of preserved plant species, increasingly daring and dramatic executions, greater longevity, and more,” speculates Hisim. The future of green architecture sounds compelling — and Garden on the Wall looks set to lead us there.

Catalogue of Finalists

Catalogue of Finalists

Building Systems Building Equipment & Systems



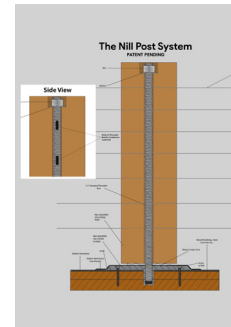
Leica BLK2GO
Leica Geosystems, part of
Hexagon
leica-geosystems.com/en-us



Handcrafted Vapor Fireplace
Bespoke Vapor Fireplaces
bespokevaporfireplaces.com



LG Art Cool™ Premier Wall Mount Split System
LG Electronics
lg.com/us



The Nill Post System
Nill Building Solutions
nillbuildingsolutions.com

Building Systems Smart Building & Technology



Friday Smart Lock
Friday Home
fridayhome.net

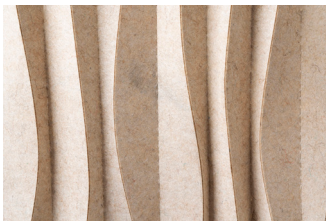


Intentek Wireless Charging Surfaces
Formica Group
formica.com/en-us/



LightGlass - the fusion of light & glass
Glass Technology GmbH
lightglass.net

Building Systems Sustainable Design Products



BiOrigami
Studio Samira Boon
samiraboone.com



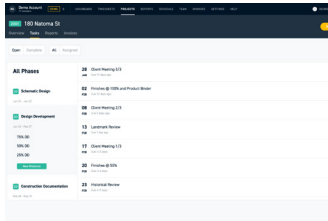
spaces
THIBAUT VAN RENNE BV
thibaultvanrenne.com



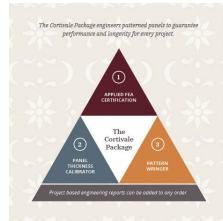
Flek
3form
3-form.com

Catalogue of Finalists

Design Tools Software & Digital Tools



Monograph
Monograph
monograph.io

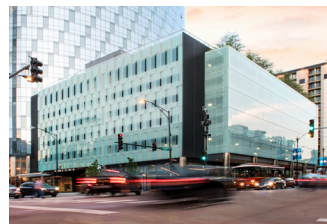


The Cortivale Package
Parasoleil
parasoleil.com

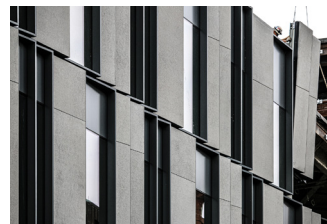
Facades Building Envelopes & Cladding



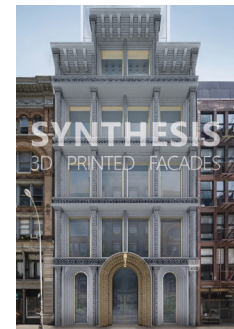
Kaynamaile
Kaynamaile Ltd
kaynamaile.com



Ventilated Glass Facade for Parking Structures
Bendheim
bendheim.com

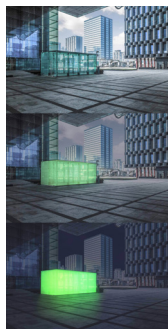


KORSA
TAKTL LLC
taktl-llc.com



SYNTHESIS - 3D Printed Facade
EDG
edgny.com

Facades Glass & Glazing



LightGlass - the fusion of light & glass
Glass Technology GmbH
lightglass.net



cero
Solarlux GmbH
solarlux.com/de-de



Acubis
Solarlux GmbH
solarlux.com/de-de

Catalogue of Finalists

Finishes Acoustics



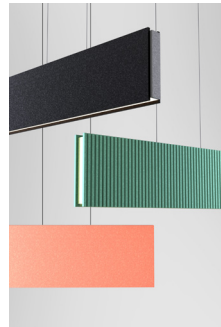
Blade Acoustic Lighting

Luxxbox
luxxbox.com



Nivo Acoustic

Focal Point
focalpointlights.com



Linea Acoustic Pendant

Luxxbox
luxxbox.com

Finishes Carpet



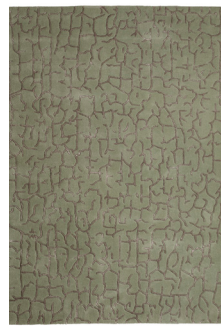
Desert Lights Carpet and Rug Collection

ROCKWELL GROUP
rockwellgroup.com



David Rockwell Collection for The Rug Company

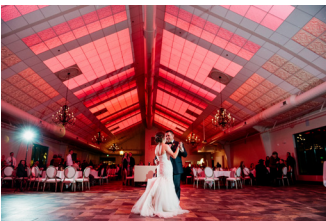
ROCKWELL GROUP
rockwellgroup.com



Oceania

Naja Utzon Popov
najautzonpopov.com

Finishes Ceilings



Transluminous and Drop-Out Ceiling Panels

Ceillume
ceillume.com

Catalogue of Finalists

Finishes Ceramics



Fio.Ghiaia
Ceramica Fioranese
fioranese.it/en



Mata Collection
Lurca Ceramic Tiles
lurca.com.br

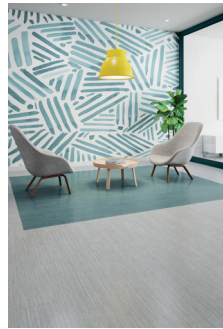


Protz Studio Patterned Ceramic Tiles
Protz Studio
protzstudio.com

Finishes Flooring



Deconstructed Felt
Patcraft
patcraft.com



Mark Making
Patcraft
patcraft.com



Rejuvenations™ Restore™ with Diamond 10™ Technology coating
Armstrong Flooring
armstrongflooring.com

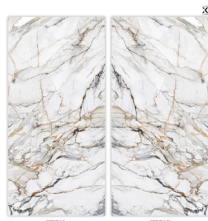


Korlok Select American Barnwoods Name
Karndean Designflooring
karndean.com

Finishes Hard Surfacing



Black Tempal
Caesarstone
caesarstoneus.com



Neolith Calacatta Luxe
Neolith® by TheSize
neolith.com



Dekton Liquid Collection
Cosentino
cosentino.com/usa



THINSCAPE™ Performance Tops
Wilsonart
wilsonart.com

Catalogue of Finalists

Finishes Wall & Wall Coverings



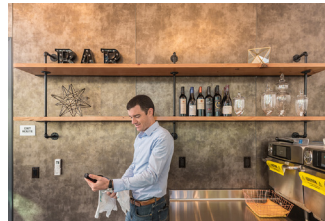
EBB+FLOW WALLCOVERING COLLECTION

Jill Malek
jillmalek.com



SYNTHESIS - CUSTOM CONCRETE WALL PANELS

EDG
edgny.com



Atmos

Pure + FreeForm
purefreeform.com



Contourz Concrete Tiles

Lunada Bay Tile
lunadabaytile.com

Furnishings Accessories



BuzziPlanter

BuzziSpace
buzzi.space



Hew Tray

Zaha Hadid Architects
zaha-hadid.com



Vestalia candle holder

LATOxLATO
latoxlato.com

Furnishings Contract Furniture & Systems



Atelier

Gensler
gensler.com



Swing

Pair
madebypair.com



Mix

Pair
madebypair.com



Q! Landscape

Springboard
springboard-us.com

Catalogue of Finalists

Furnishings Contract Seating



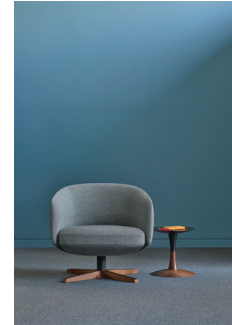
Rho
Davis Furniture
davisfurniture.com



Ellaby
Keilhauer
keilhauer.com

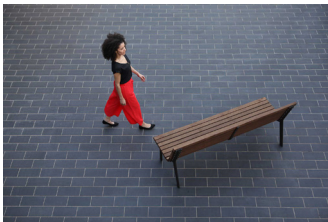


Wedge
Keilhauer and Division Twelve
division12.com



Verge
Keilhauer
keilhauer.com

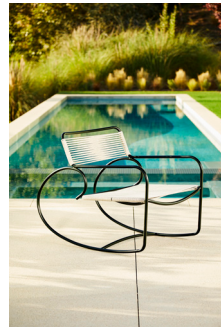
Furnishings Outdoor Furniture



Generation 50
Landscape Forms
landscapeforms.com



Elements by Tecno
Brown Jordan Outdoor Kitchens and Daniel Germani
brownjordanoutdoorkitchens.com



Walter Lamb Aluminum Rocking Chair
Brown Jordan Outdoor Kitchens
brownjordanoutdoorkitchens.com



Green Life Armchair
Visionnaire
visionnaire-home.com

Furnishings Residential Furniture



Ori Studio Suite
Ori, Inc.
oriliving.com



Rugosa Collection
Kalon Studios
kalonstudios.com



Horizon sideboard
Lia Siquiera for Etel Design
azularquitetura.com.br

Catalogue of Finalists

Furnishings Residential Seating



John Chair
equipe lamas
equipelamas.com



Capper Seating and Ottomans
Phase Design
phasedesignonline.com



REVERSIVEL
TACCHINI ITALIA FORNITURE S.R.L.
tacchini.it/en/

Kitchen & Bath Appliances



Lux Island
Zephyr
zephyronline.com



Lift Downdraft
Zephyr
zephyronline.com



36-inch Dual-Fuel Pro Range with sous vide
Signature Kitchen Suite
signaturekitchensuite.com/us

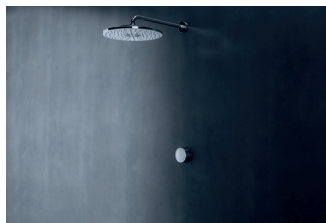
Kitchen & Bath Fixtures & Fittings



Stainless Steel Shower Base
Infinity Drain
infinitydrain.com



Valvola01
Quadro srl
quadrodesign.it/en



GROHE Rainshower 310 SmartConnect
Grohe AG
grohe.com/en/

Catalogue of Finalists

Kitchen & Bath Millwork & Cabinetry



Frankford Wine Room
Amuneal
amuneal.com



MATCH
Reform
reformcph.com/us/



Stellé Collection
WETSTYLE
wetstyle.ca

Kitchen & Bath Plumbing & Drainage



Slot Linear Drain
Infinity Drain
infinitydrain.com



6030 Organic Shower Base
MTI Baths
mtibaths.com

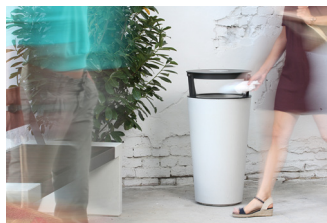
Landscape Outdoor Products & Materials



Clean Zone
*HYUNDAI ENGINEERING
& CONSTRUCTION*
hdec.co.kr



When the whale meets the future
ANTAO
antaogroup.com/zh-cn



BINN
*VPI Concrete Design
& Manufacture*
vpi.hu

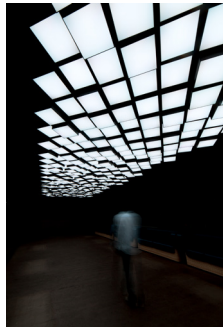
Catalogue of Finalists

Lighting Contract Lighting



Blade Acoustic Lighting

Luxxbox
luxxbox.com



Cubic Sky

Cactus
cactus.is/cubicsky



Tube

Vibia
vibia.com

Lighting Residential Lighting



Shellby

*Pits nv, Modular Lighting
Instruments*
supermodular.com/en/home



Sun -- Light of Love

Foscarini
foscarini.com/en/



Hollow

*Pits nv, Modular Lighting
Instruments*
supermodular.com/en/home



Nebula Collection

Hammerton Lighting
hammerton.com

Openings Doors & Door Hardware



S4 Screen & Shade System

Centor
centor.com/us/



Frankford Doors

Amuneal
amuneal.com



**Temperature Sensitive Sealed
Door System**

Westhampton Architectural Glass
wharchglass.com

Catalogue of Finalists

Openings Windows & Skylights



**Vitrocsa Hurricane Impact
Rated Fixed & Sliding**

Goldbrecht Inc
goldbrecht.com



Pella Lifestyle Series

Pella Corporation
pella.com

Index

3form, *Flek*, 122

Amuneal, *Frankford Wine Room*, 129

Amuneal, *Frankford Doors*, 130

ANTAO, *When the whale meets the future*, 129

Arktura, *SoftGrid® Flux*, 34-35

Arper, *Paravan Mood*, 62-63

Armstrong Flooring, *Rejuvenations™ Restore™ with Diamond 10™ Technology coating*, 125

ASSA ABLOY, *Rockwood PDU8500 Architectural Storefront Panic Device*, 110-111

Bendheim, *Ventilated Glass Facade for Parking Structures*, 24-25, 123

Bespoke Vapor Fireplaces, *Handcrafted Vapor Fireplace*, 122

Brown Jordan Outdoor Kitchens, *Walter Lamb Aluminum Rocking Chair*, 127

Brown Jordan Outdoor Kitchens and Daniel Germani, *Elements by Tecno*, 127

Butlr, *Butlr Heatic™ Sensor and Butlr BI™ for Smart Living*, 18-19

BuzziSpace, *BuzziPlanter*, 126

BuzziSpace, *BuzziRing*, 60-61

Cactus, *Cubic Sky*, 130

Caesarstone, *Black Tempal*, 125

Ceilume, *Transluminous and Drop-Out Ceiling Panels*, 124

Centor, *S4 Screen & Shade System*, 130

Ceramica Fioranese, *Fio.Ghiaia*, 125

Ceramiche Caesar, *JOIN*, 50-51

COEM/FIORENESE distributed by Stone Source, *PORFIRICA*, 54-55

Cosentino, *Dekton Liquid Collection*, 125

Davis Furniture, *Rho*, 127

Easy Sanitary Solutions, *Easy Drain Pool Line*, 96-97

EDG, *SYNTHESIS - 3D Printed Facade*, 123

EDG, *SYNTHESIS - CUSTOM CONCRETE WALL PANELS*, 126

EGGER, *Feelwood*, 56-57

equipe lamas, *John Chair*, 128

FCstudio, *Brasilia Coffee Table*, 74-75

FLOS with Konstantin Grcic, *Noctambule*, 106-107

Focal Point, *Nivo Acoustic*, 123

Focal Point, *Seem 1 Acoustic Trio*, 38-41, 104-105

Formica Group, *Intentek Wireless Charging Surfaces*, 122

Foscarini, *Sun -- Light of Love*, 130

Friday Home, *Friday Smart Lock*, 122

Gabriele Centazzo / Valcucine SPA, *Logica Celata*, 88-89

Garden on the Wall, *Garden Installations created with Preserved Plants*, 58-59, 116-117

Gensler, *Atelier*, 126

Glass Technology GmbH, *LightGlass - the fusion of light & glass*, 114-115, 122, 123

Goldbrecht Inc., *Vitrocsa Hurricane Impact Rated Fixed & Sliding*, 131

Gordon, Inc., *WinLok Accessible Soffit / Ceiling, Screen Wall, & Fascia System*, 48-49

GRAPHISOFT, *ARCHICAD 23*, 26-27

Grohe AG, *GROHE Rainshower 310 SmartConnect*, 128

Guardian Glass, *Guardian® Bird1st™ Glass*, 32-33

Hammerton Lighting, *Nebula Collection*, 130

Henrybuilt, *Space Theory*, 94-95

Hypedome, *Hypedome*, 72-73

HYUNDAI ENGINEERING & CONSTRUCTION, *Clean Zone*, 129

Infinity Drain, *Stainless Steel Shower Base*, 128

Infinity Drain, *Slot Linear Drain*, 129

Jill Malek, *EBB+FLOW WALLCOVERING COLLECTION*, 126

Kalon Studios, *Rugosa Collection*, 127

Karndean Designflooring, *Korlok Select American Barnwoods*, 125

Kaynamaile Ltd, *Kaynamaile*, 123

Keilhauer, *Ellaby*, 127

Keilhauer, *Verge*, 127

Keilhauer and Division Twelve, *Wedge*, 127

Kingspan Light + Air, *Kingspan Day-Lite Kapture Skylight*, 112-113

Landscape Forms, *Generation 50*, 127

Landscape Forms, *Motive*, 100-101

LATOxLATO, *Vestalia candle holder*, 126

Leica Geosystems, part of Hexagon, *Leica BLK2GO*, 122

LG Electronics, *LG Art Cool™ Premier Wall Mount Split System*, 122

Lia Siquiera for Etel Design, *Horizon sideboard*, 127

Lunada Bay Tile, *Contourz Concrete Tiles*, 126

Lurca Ceramic Tiles, *Mata Collection*, 125

Luxxbox, *Blade Acoustic Lighting*, 124

Luxxbox, *Linea Acoustic Pendant*, 124

Index

- Luxxbox**, *Blade Acoustic Lighting*, 130
- Mila International**, *Batló Bath Sink*, 86-87
- Mirage**, *Norr 2.0*, 52-53
- Monograph**, *Monograph*, 123
- MTI Baths**, *6030 Organic Shower Base*, 129
- Naja Utzon Popov**, *Oceania*, 124
- NanaWall Systems**, *SL84*, 108-109
- Native Trails**, *Mendocino*, 82-83
- Neolith® by TheSize**, *Neolith Calacatta Luxe*, 125
- Nil Building Solutions**, *The Nil Post System*, 122
- Ori, Inc.**, *Ori Studio Suite*, 127
- Ori, Inc.**, *Pocket Closet*, 20-21
- Pair**, *Swing*, 126
- Pair**, *Mix*, 126
- Parasoleil**, *The Cortivale Package*, 123
- Patcraft**, *Deconstructed Felt*, 125
- Patcraft**, *Mark Making*, 125
- Pella Corporation**, *Pella Lifestyle Series*, 131
- Phase Design**, *Copper Seating and Ottomans*, 128
- Pits nv, Modular Lighting Instruments**, *Shellby*, 130
- Pits nv, Modular Lighting Instruments**, *Hollow*, 130
- Pretty Plastic**, *Pretty Plastic*, 30-31
- Protz Studio**, *Protz Studio Patterned Ceramic Tiles*, 125
- Pure + FreeForm**, *Atmos*, 126
- Quadro srl**, *Valvola01*, 128
- QZ Urban Furniture**, *Whale Tail bench*, 98-99
- Reform**, *MATCH*, 129
- REPUBLIC OF II BY IV**, *Mist Collection for Shaw Contract*, 44-45
- REPUBLIC OF II BY IV**, *Masque Collection for Suite 22 Contract*, 70-71
- ROCKWELL GROUP**, *Desert Lights Carpet and Rug Collection*, 124
- ROCKWELL GROUP**, *David Rockwell Collection for The Rug Company*, 124
- ROCKWELL GROUP**, *Sage by David Rockwell for Benchmark*, 76-77
- Schindler Elevator Corporation**, *Schindler UV PRO & CleanRail handrail solutions*, 16-17
- Signature Kitchen Suite**, *36-inch Dual-Fuel Pro Range with sous vide*, 128
- Sky Factory**, *Aperture SkyCeiling*, 102-103
- Sky Factory**, *INFINITY SkyCeiling*, 46-47
- Solarlux GmbH**, *cero*, 123
- Solarlux GmbH**, *Acubis*, 123
- Springboard**, *QI Landscape*, 126
- Studio Samira Boon**, *BiOrigami*, 36-37, 122
- Stylex**, *Free Address*, 68-69
- TACCHINI ITALIA FORNITURE S.R.L.**, *REVERSIVEL*, 128
- TAKTL LLC**, *KORSA*, 123
- THIBAUT VAN RENNE**, *spaces*, 42-43, 122
- UXUA DAS**, *POLTRONA U*, 78-79, 90-93
- Vectorworks, Inc.**, *Vectorworks Architect 2020 software*, 28-29
- Vibia**, *Tube*, 130
- Viking Range, LLC**, *48" Limited Edition Dual Fuel Range - VDR7482*, 84-85
- Visionnaire**, *Green Life Armchair*, 80-81, 127
- VPI Concrete Design & Manufacture**, *BINN*, 129
- Westhampton Architectural Glass**, *Temperature Sensitive Sealed Door System*, 130
- WETSTYLE**, *Stellé Collection*, 129
- Wilsonart**, *THINSCAPE™ Performance Tops*, 125
- Zaha Hadid Architects**, *Hew Tray*, 126
- Zauben**, *Model Z*, 22-23, 64-67
- Zephyr**, *Lux Island*, 128
- Zephyr**, *Lift Downdraft*, 128

Copyright + Credits

Copyright © 2020 Architizer, Inc. All rights reserved.

Cover and book design by Holly Urkevich / HAU Design.

Essay by Paul Keskeys, Editor-in-Chief.

Created and edited by Architizer. Special thanks to Nikki-Lee Birdsey, Kelly Britton, Connie Chang, Paul Keskeys and Chloé Vadot.

No part of this book may be reproduced, sold or distributed without written permission from Architizer, Inc. This book was produced in collaboration with participating brands and all product images and text are courtesy of participants, unless otherwise indicated.

First Edition Published: November 2020

Architizer, Inc.

www.Architizer.com